



FURNITURE AND MEDICAL EQUIPMENT



CUSTOMER EXPERIENCE CENTERS

Unique value proposition

In our global medical training centers users, architects and planners work together with experts from ALVO and our partners to plan and design ergonomics in the operating room under realistic conditions. Surgical teams can experience how easy and quick it is to set up their OR for surgery in a completely integrated video-over-IP environment.

Contact us to find out about current events:
aic@alvo.pl



The dialogue with surgeons, operating rooms personnel, hospital managers, investors and architects brings us new ideas resulting from adjustments to medical technology development, design challenges but also sanitary and epidemiological requirements.



1
ALVO Integra Center
 21 A Południowa Street
 64-030 Śmigiel, **POLAND**

2
Cadolto Fertiggebäude
 GMBH & CO. KG
 Wachendorfer Straße 34
 Cadolzburg, **GERMANY**

3
PT Medisave Makmur Gemilang
 Puri Mansion Blok A #27-28
 Jl Lingkar Luar Barat
 Kembangan Selatan Kembangan
 Jakarta Barat 11610
INDONESIA

4
BENCHMARK Medical Equipment
 Lot 15, Medan Kelang Lama 28,
 No. 419, Jalan Kelang Lama,
 58000 Kuala Lumpur,
MALAYSIA

5
Dräger Design Center
South Africa
 Dräger South Africa (Pty) Ltd.
 PO Box 4676, Rivonia, 2128
REPUBLIC OF SOUTH AFRICA

6
Dräger Design Center India
 Dräger Medical India Pvt. Ltd.
 Ground Floor,
 Goldline Business Centre
 Linkway Industrial Estate
 Link Road, Malad (West)
 400 064 Mumbai, **INDIA**

7
Simonsen & Weel
Design Center
 Vejlegårdsvej 59
 DK-2665 Vallensbæk Strand
DENMARK

8
Södersjukhuset (Sös) Hospital
Mockup OR
 Sjukhusbacken 10
 118 83 Stockholm, **SWEDEN**



9
Dräger Design Center China
 Draeger Medical Equipment
 Hupo Road 229, SIMZ,
 Pudong, Shanghai, **CHINA**

10
Customer Experience Center
Hanoi
 Vietnam Medical Equipment
 Corporation
 89 Luong Dinh Cua street, Phuong Mai
 ward, Dong Da district
 Hanoi, **VIETNAM**

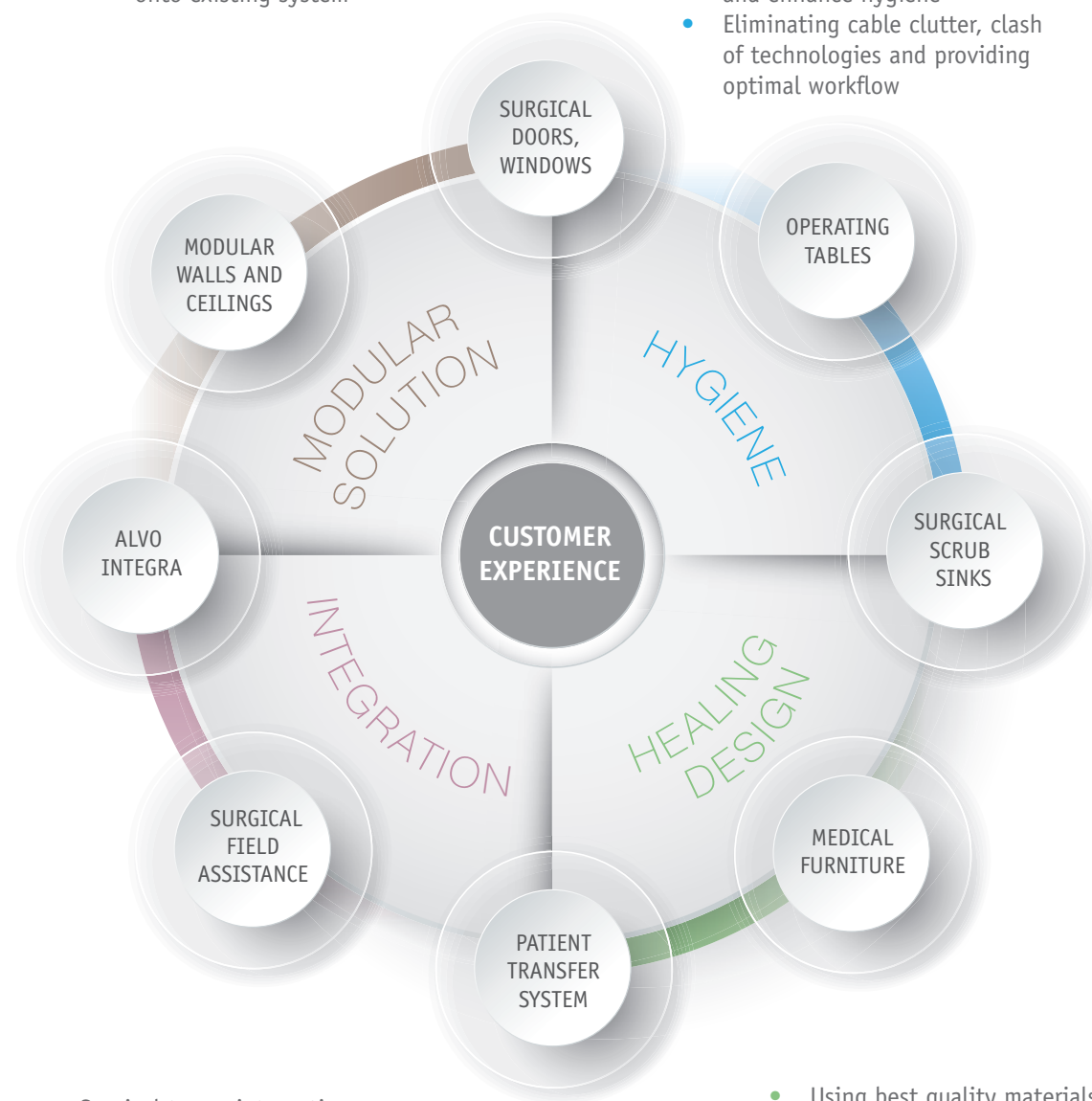
11
Dräger Medical México, S.A. de C.V.
German Centre
 Av. Santa Fe, 170 5-4-14
 Col. Lomas de Santa Fe
 01210 México D.F.,
MEXICO

12
Dräger Medical (Thailand) Ltd.
 L909 Ample Tower, 5th FL.,
 Debaratana Rd.,
 Bangna Nua Sub-district,
 Bangna District, Bangkok,
THAILAND



- Easy to install and maintain
- Future-proof architecture
- Possible to develop or add onto existing system

- Holistic approach to designing operating rooms and other hospital areas in order to support cleaning procedures and enhance hygiene
- Eliminating cable clutter, clash of technologies and providing optimal workflow



- Surgical teams integration
- Technology integration
- Enhanced clinical outcomes through proper access to patient's data

- Using best quality materials and design solutions, optimizing lights parameters in the room
- Modular technology with storage cabinets and monitors built into the walls saves space and gives modern and prestigious look

MODULAR FURNITURE SYSTEM

6

SCRUB SINKS

12

INSTRUMENT TABLES AND TREATMENT TROLLEYS

20

MEDICAL TROLLEYS

26

EQUIPMENT FOR OPERATING ROOMS

36

TROLLEYS FOR MEDICAL DEVICES

46

TROLLEYS FOR LINEN, MEDICAL WASTE

52

CABINETS

58

BASKETS, SHELVES AND TROLLEYS

78

WORKING TABLES

90

COUCHES AND BED SCREENS

100

01

MODULAR
FURNITURE
SYSTEM

ALVO[®]
MEDICAL

The ALVO modular furniture system was designed with the needs of medical staff in mind, taking into account the demands of our customers and guaranteeing the highest standards of hygiene, functionality and ergonomics but also comfort and safety during use. ALVO's modular medical furnishings are characterized by a user-friendly design and delicate contours, allowing limitless possibilities for customization and ensuring the optimal utilization of hospital space. Keeping in mind the specialized demands of the health sector, the ALVO modular furnishing line ensures the best utilization of internal cabinetry space, offering a wide range of practical solutions matched to the needs of our customers and allowing for individual interior design by the user.



The modular furniture system by ALVO offers various types of high cabinets, low cabinets, suspended cabinetry, cabinetry extensions, tables and tables with embedded sinks. From this wide range of products our customers are able to design interiors for many purposes, choosing specifications as detailed as the number of shelves and drawers according to individual needs.

Furnishings are made from durable, grade 1.4301 stainless steel or powder-coated sheet steel, painted from one of the colors of the ALVO RAL palette.

Table and counter tops can be constructed of stainless steel, mineral-acrylic materials (like Corian, Staron), medium-density fiberboard (MDF) or high-pressure laminate (HPL). In addition, furnishings can be fitted with made to measure stainless steel or powder-coated sheet steel trims. These trims serve to cover any given space between furnishings and walls or furnishings and ceiling. Thanks to the wide availability of accessories (including bins and hangers from the stainless steel or ABS in accordance with the ISO system), the ergonomic and optimal utilization of interior cabinet space is guaranteed.



01

MODULAR
FURNITURE
SYSTEM

ALVO[®]
MEDICAL

ALVO[®]
MEDICAL

STEEL TRIM

DRUG REFRIGERATOR

FLAT STAINLESS STEEL TABLE TOP

LOCKED CABINET



02

SCRUB SINKS

ALVO[®]
MEDICAL

ALVO scrub sinks are made of the highest quality stainless steel 1.4301, and selected designs are made of mineral composite materials. The surgical scrubs are designed for operating theatres and other facilities where highest hygienic standards have to be maintained.

MAIN FEATURES

As standard products we offer sinks with single, double and triple bays; free standing and wall hanging. We offer a wide range of options, such as knee operated or infrared water tap and soap dispensers. Additional accessories such as touchless and elbow operated faucets, brush and paper towel dispensers can also be ordered.





2-090

Scrub sink

- made of stainless steel 1.4301
- wall mounted scrub sink
- bay depth: 200 mm
- PVC siphon included
- additional accessories available: water taps, soap and disinfectant dispensers, brush dispensers and paper towels dispensers, **ALVO self-disinfecting CleanDrains siphon**

	L	W	H	
2-090-1	845	520	440	single station
2-090-2	1600	520	440	double station
2-090-3	2355	520	440	triple station



2-091

Scrub sink

- made of stainless steel 1.4301
- wall mounted scrub sink
- front panel can be disassembled
- bay depth: 200 mm
- PVC siphon included
- additional accessories available: water taps, soap and disinfectant dispensers, brush dispensers and paper towels dispensers, **ALVO self-disinfecting CleanDrains siphon**

	L	W	H	
2-091-1	845	600	1240	single station
2-091-2	1600	600	1240	double station
2-091-3	2355	600	1240	triple station



2-092

Scrub sink

- made of stainless steel 1.4301
- free standing sink with wall mounting possibility
- bay depth: 300 mm
- standard: PVC siphon and chrome faucet included; knee activated water and soap dispensers; water and soap time adjustable (0,25 s - 12 min); adjustable water temperature (35°C - 41°C); chrome faucets
- additional accessories available: soap and disinfectant dispensers, brush dispensers and paper towels dispensers, **ALVO self-disinfecting CleanDrains siphon**

	L	W	H	
2-092-1	845	635	1170	single station
2-092-2	1600	635	1170	double station
2-092-3	2355	635	1170	triple station



2-093

Scrub sink

- made of stainless steel 1.4301
- free standing sink with wall mounting possibility
- bay depth: 300 mm
- the front panel of the scrub sink can be opened, lockable with 2 bolts
- standard: PVC siphon and chrome faucets; water and soap touchless activated; water and soap time adjustable; adjustable water temperature;
- additional accessories available: soap and disinfectant dispensers, brush dispensers and paper towels dispensers, **ALVO self-disinfecting CleanDrains siphon**

	L	W	H	
2-093-1	845	635	1270	single station
2-093-2	1600	635	1270	double station
2-093-3	2355	635	1270	triple station



2-094

Scrub sink

- scrub sink intended for installation into wall panel systems, installed flush against surrounding walls/panels
- wall panel, counter-top and sink made of mineral composite material
- ergonomic shape protects from splashing water
- standard: infrared faucet; electrical power supply; stainless steel siphon
- different type of water tap can be used
- additional accessories available: different water taps, soap and disinfectant dispensers, brush dispensers and paper towels dispensers, **ALVO self-disinfecting CleanDrains siphon**

	L	W	H	
2-094-1	990	730	670	single station
2-094-2	1740	730	670	double station
2-094-3	2490	730	670	triple station



2-095

Scrub sink

- wall-mounted scrub sink with wall panel
- wall panel made of stainless steel 1.4301
- sink bay made of mineral composite material
- ergonomic shape protects from splashing water
- standard: infrared faucet; electrical power supply; stainless steel siphon
- different type of water tap can be used
- additional accessories available: different water taps, soap and disinfectant dispensers, brush dispensers and paper towels dispensers, **ALVO self-disinfecting CleanDrains siphon**

	L	W	H	
2-095-1	850	815	790	single station
2-095-2	1600	815	790	double station
2-095-3	2350	815	790	triple station

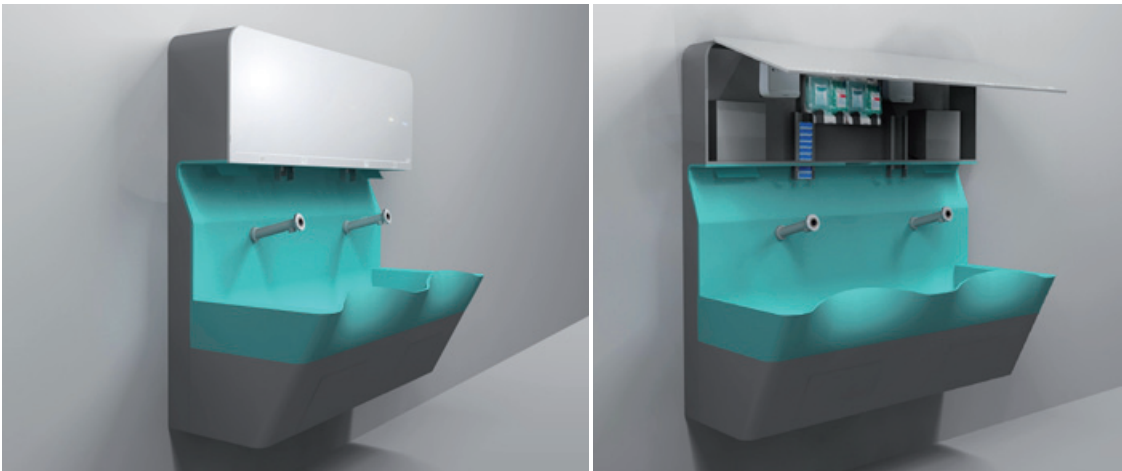
Surgical scrub sink designed according to WHO recommendations.

We take a human-oriented design approach when developing new medical products.



To truly understand what the top tasks of the surgical teams are when they enter the scrub rooms and how well these tasks can be performed, we use ethnographically informed research and co-design sessions. By moving design activity into the OR routine, our team has created a new modular scrub sink, calling it „a great piece of furniture which helps to prevent the spread of infection“.

The new ALVO scrub sink unit with superior design lines, enhanced functionality and easy to clean hygienic surfaces is the right solution for any operating theatre.



2-096 Surgical scrub sink ALVO Premium

- wall mounted compact scrub sink unit with accessories
- paper towels, brushes, disinfectant and soap dispensers come flush behind the mirror or art panel, which makes additional storage space
- ergonomic apron contour protects from splashing the water and enables comfortable position
- counter-top and sink made of mineral composite material with antibacterial properties containing silver nanoparticles
- rounded corners make it easy to clean
- wide edges of scrub sink enable to prepare a sterile towel and brush
- removable box made of mineral composite material is placed inside for used brushes
- completely touch free 3-in-one faucets with intuitive infrared sensor technology to activate water, soap and disinfecting solution
- comfortable waste management with knee activated baskets below each bay
- ALVO CleanDrains siphon for drains disinfection included (see more page 19)

	L	W	H
2-096	1600	695	1600

Proven effectiveness in the fight against multidrug resistant bacteria, including p. Aeruginosa (MDR-PA)



- Winner of the “Interiors of the Future” award, 2016
- The product has been awarded in the prestigious i-Novo Design Awards 2015



2-900

Brush dispenser

- made of stainless steel 1.4301
- includes 6 brushes

	L	W	H
2-900	130	83	341



2-901-1

Disinfectant fluid or soap dispenser

- made of stainless steel
- elbow operated dispenser
- size 500 ml



2-901-2

Disinfectant fluid or soap dispenser

- made of stainless steel
- elbow operated dispenser
- size 1000 ml



2-902

Infrared soap or disinfectant fluid dispenser

- made of stainless steel
- touch free dispenser
- size 1000 ml



2-903-1

Paper towels dispenser

- made of plastic
- size 250 pcs



2-903-2

Paper towels dispenser

- made of stainless steel
- size 250 pcs



2-904-1

Paper towels dispenser

- made of plastic
- size 500 pcs



2-904-2

Paper towels dispenser

- made of stainless steel
- size 500 pcs



2-905

Elbow operated water tap, wall mounted

- elbow operated water tap with extended clinical handle
- specifically designed for models: 2-090, 2-091, 2-094, 2-095

2-906

Infrared faucet, sink panel mounted

- infrared faucet, connected to the main power supply
- specifically designed for models: 2-091, 2-094, 2-095

2-907

Infrared faucet wall mounted

- infrared faucet, battery supply
- specifically designed for models: 2-090, 2-091, 2-094, 2-095

2-908

Infrared faucet with infrared fluid dispenser

- infrared faucet, connected to the main power supply (230V)
- specifically designed for models: 2-091, 2-093, 2-094, 2-095

2-911

Mirror - over sink mounted

- standard dimensions:
 - 2-911-1 845x600 mm
 - 2-911-2 1600x600 mm
 - 2-911-3 2355x600 mm

2-912

Infrared faucet with touch free water temperature adjustment

- infrared faucet, connected to the main power supply (230V)
- specifically designed for models: 2-091, 2-094, 2-095

2-913

ALVO CleanDrains Siphon

ALVO self-disinfecting CleanDrains system is a CE-certified disinfection system for sink drains in clinical sanitary areas. Its continuous and fully automatic disinfection process prevents the production of infectious bio-aerosols and thus the transfer of pathogens from the wash basin to the patient. The thermal disinfection carried out by the system fulfils at least the standards of the technical process of pasteurization by means of heating (10 to 15 seconds at 85°C). In the process the unit heats up to the set temperature (85°C) and slowly cools down while the subsequent vibration cleaning takes place. Once the minimum set temperature has been reached (75°C), the heating process and thus the disinfection cleaning cycle repeats. If no interruption is caused by additional water inflow, then the entire process is completed after 5-6 cycles in a period of approximately one hour and the system switches into standby mode until water flows again.

The findings of the research, conducted at the ICU in Leiden, the Netherlands, published in the Journal of Hospital Infections, indicate that the disinfection with the ALVO CleanDrains siphon combats multidrug resistant *Pseudomonas Aeruginosa* (MDR-PA) from the sink drains.



ALVO instrument tables and treatment trolleys are made of the highest quality of stainless steel and designed to support medical staff in all situations. Tables and trolleys are created to store surgical instruments and dressings during and after the surgical intervention or examination procedure.

MAIN FEATURES

Tables and trolleys are equipped with high quality castors with non-smudging wheels and bumpers which protect the table from damage. The tables have ergonomic handles for easy manoeuvring. Additional accessories such as drawers, bowls and trays can also be included.





2-001

Mayo instrument table

- made of stainless steel 1.4301*
- height adjusted recessed table top by foot lever, and with 360° horizontal rotation
- table top dimensions: 740x490 mm
- t-shape base on three castors with diameter 80 mm, with brakes and non-smudging wheels
- permissible load: 15 kg



	L	W	H
2-001	740	490	960/1370



2-010

Mayo instrument table

- made of stainless steel 1.4301*
- manually height adjusted table top, and with 360° horizontal rotation
- table top dimensions: 615x405 mm
- t-shape base on three castors with diameter 50 mm, with brakes and non-smudging wheels
- permissible load: 5 kg



	L	W	H
2-010	640	450	920/1370



2-002

Surgical instruments table

- made of stainless steel 1.4301
- manually height adjusted with hand crank
- table top dimensions: 1200x600 mm
- based on four castors with diameter 80 mm with brakes and non-smudging wheels
- permissible load: 20 kg

	L	W	H
2-002	1270	600	1000/1400

1400
with crank handle



2-016

Surgical instruments and medical materials table

- made of stainless steel 1.4301
- one removable container on the table top with sealed cover
- distance between container and shelf 470 mm
- recessed table top - removable tray with dimensions: 536x336 mm
- fixed recessed shelf in lower part, situated 150 mm above the floor
- distance between table top and shelf 640 mm
- manoeuvring handle situated along the shorter side of the table top
- container's dimensions:
exterior: 325x176x200 mm
interior: 300x150x200 mm
- based on four castors with diameter 80 mm, two of them with brakes
- castors with non-smudging wheels and plastic bumpers

	L	W	H
2-016	860	440	850



2-017

Surgical instruments and medical materials table

- made of stainless steel 1.4301
- two removable containers on the table top, the bigger container with sealed cover
- distance between containers and shelf 470 mm
- fixed recessed shelf in lower part, situated 150 mm above the floor
- distance between table top and shelf 640 mm
- manoeuvring handle situated along the shorter side of the table top
- exterior containers' dimensions:
smaller: 530x325x200 mm
bigger: 325x176x200 mm
- interior containers' dimensions:
smaller: 500x300x200 mm
bigger: 300x150x200 mm
- based on four castors with diameter 80 mm, two of them with brakes
- castors with non-smudging wheels and plastic bumpers

	L	W	H
2-017	860	440	850

* optionally: table top and handle for height adjustment can be made of antimicrobial copper



Accessories for treatment trolleys

Drawer

- made of stainless steel 1.4301

2-933-1 Plexi divider

- removable drawer divider - into 4 parts

2-933-2 Plexi divider

- removable drawer divider - into 6 parts

2-933-3 Plexi divider

- removable drawer divider - into 8 parts

2-934 Bowl with handle

- made of stainless steel 1.4301
- capacity: 3 l

2-936 Bowl with handle

- made of stainless steel 1.4301
- capacity: 6 l

2-939 Wire waste basket with cover

- made of stainless steel 1.4301
- dimensions: 311x226x255 mm

2-941 Holder for plastic bags

- made of stainless steel 1.4301
- base for holding the bag at the bottom
- capacity: 15 l
- dimensions: 220x238x316 mm



2-201
Treatment trolley

- made of stainless steel 1.4301 with flat table top
- manoeuvring handle situated along the shorter side of the table top, option without handle also available
- based on four castors with diameter 100 mm, two of them with brakes
- castors with non-smudging wheels and plastic bumpers
- available a version for self assembly catalogue number: 2-211, with two handles and on four castors with diameter 80 mm
- table top options: recessed surface, a removable tray, with rails
- available for assembly additional accessories like steel bowls, infusion stand, drawer

CE

	L	W	H	table top
2-201-1	765	470	880	650x400
2-201-2	865	720	880	750x650
2-201-3	1115	720	880	1000x650
2-201-4	1315	720	880	1200x650
2-201-5	1615	720	880	1500x650
	L	W	H	table top
2-211-1	720	470	880	650x400
2-211-2	820	720	880	750x650
2-211-3	1070	720	880	1000x650
2-211-4	1270	720	880	1200x650



2-202
Treatment trolley

- made of stainless steel 1.4301, with flat table top and fixed shelf under it
- distance between the table top and shelf 445 mm
- manoeuvring handle situated along the shorter side of the table top
- based on four castors with diameter 100 mm, two of them with brakes
- castors with non-smudging wheels and plastic bumpers
- available a version for assembly, catalogue number: 2-212, with two handles and on four castors with diameter 80 mm
- table top/shelf options: recessed surface, a removable tray, with rails
- available for assembly additional accessories like steel bowls, infusion stand, drawer

CE

	L	W	H	table top
2-202-1	765	470	880	650x400
2-202-2	865	720	880	750x650
2-202-3	1115	720	880	1000x650
2-202-4	1315	720	880	1200x650
2-202-5	1615	720	880	1500x650
	L	W	H	table top
2-212-1	720	470	880	650x400
2-212-2	820	720	880	750x650
2-212-3	1070	720	880	1000x650
2-212-4	1270	720	880	1200x650



ALVO medical trolleys are designed to keep the surgical instruments and supplies near at hand during surgical interventions and other procedures in the operating room.

MAIN FEATURES

The trolleys can be tailor-made, adjusting to the customers' needs and requirements, with different combinations of drawers, cabinets and shelves. Drawers are installed on ball bearing slides which allow the drawer for full extension and self-closing. The ergonomic fittings are made of stainless steel or antimicrobial copper on request, and enable easy maneuvering. The trolleys are equipped with high quality castors with non-smudging wheels and bumpers which protect table from damage.





2-301

Medical trolley

- made of stainless steel 1.4301
- cabinet with double wing doors
- flat table top
- manoeuvring handle situated at front side of the trolley
- one adjustable shelf made of stainless steel in the interior
- base on four castors with diameter 100 mm, two of them with brakes
- all edges rounded and safe
- table top dimensions: 650x600 mm

	L	W	H
2-301	690	700	985



2-302

Medical trolley

- made of stainless steel 1.4301
- under the table top one drawer
- the drawer on ball bearing slides, full-extension, self-closing
- cabinet with double wing doors
- flat table top
- manoeuvring handle situated at front side of the trolley
- one adjustable shelf made of stainless steel in the interior
- base on four castors with diameter 100 mm, two of them with brakes
- all edges rounded and safe
- table top dimensions: 650x600 mm

	L	W	H
2-302	690	700	985



2-303

Medical trolley

- made of stainless steel 1.4301
- under the table top three, same size drawers one below the other
- the drawers on ball bearing slides, full-extension, self-closing
- one fixed shelf below
- flat table top
- manoeuvring handle situated at front side of the trolley
- base on four castors with diameter 100 mm, two of them with brakes
- all edges rounded and safe
- table top dimensions: 650x600 mm

	L	W	H
2-303	690	700	985



2-305

Medical trolley

- made of stainless steel 1.4301
- under the table top two, same size drawers one below the other
- the drawers on ball bearing slides, full-extension, self-closing
- one fixed shelf below
- flat table top
- manoeuvring handle situated at front side of the trolley
- base on four castors with diameter 100 mm, two of them with brakes
- all edges rounded and safe
- table top dimensions: 650x600 mm

	L	W	H
2-305	690	700	985



2-316

Medical trolley

- made of stainless steel 1.4301
- one big drawer under the table top
- flat table top
- under the drawer: on left side, one wing door cabinet with one adjustable shelf inside; on the right side, three same size drawers
- the drawers on ball bearing slides, full-extension, self-closing
- manoeuvring handle situated at front side of the trolley
- base on four castors with diameter 100 mm, two of them with brakes
- all edges rounded and safe
- table top dimensions: 650x600 mm

	L	W	H
2-316	690	700	985



2-317

Medical trolley

- made of stainless steel 1.4301
- eight drawers divided in two columns under the table top
- flat table top
- same size drawers on ball bearing slides, full-extension, self-closing
- manoeuvring handle situated at front side of the trolley
- base on four castors with diameter 100 mm, two of them with brakes
- all edges rounded and safe
- table top dimensions: 650x600 mm

	L	W	H
2-317	690	700	985



2-318

Medical trolley

- made of stainless steel 1.4301
- four same size drawers under the table top
- the drawers on ball bearing slides, full-extension, self-closing
- flat table top
- manoeuvring handle situated at front side of the trolley
- base on four castors with diameter 100 mm, two of them with brakes
- all edges rounded and safe
- table top dimensions: 650x600 mm

	L	W	H
2-318	690	700	985



2-319

Medical trolley

- made of stainless steel 1.4301
- three same size drawers under the table top and two smaller drawers below in a row
- the drawers on ball bearing slides, full-extension, self-closing
- flat table top
- manoeuvring handle situated at front side of the trolley
- base on four castors with diameter 100 mm, two of them with brakes
- all edges rounded and safe
- table top dimensions: 650x600 mm

	L	W	H
2-319	690	700	985



2-325

Medical trolley

- made of stainless steel 1.4301
- one drawer under the table top and six drawer divided in two columns below
- the drawers on ball bearing slides, full-extension, self-closing
- flat table top
- manoeuvring handle situated at front side of the trolley
- base on four castors with diameter 100 mm, two of them with brakes
- all edges rounded and safe
- table top dimensions: 650x600 mm

	L	W	H
2-325	690	700	985



2-340

Medical trolley

- made of stainless steel 1.4301
- two small drawers under a sliding table top, and two big drawers in the lower part of the trolley
- the drawers on ball bearing slides, full-extension, self-closing
- recessed table top
- distance between the two groups of drawers of 260 mm, serving as a shelf
- base on four castors with diameter 50 mm, two of them with brakes
- table top dimensions: 500x400 mm

	L	W	H
2-340	570	470	1100



2-345

Medical trolley

- made of stainless steel 1.4301
- two same size drawers under the table top and a shelf under the drawers
- the drawers on ball bearing slides, full-extension, self-closing
- recessed table top with upraised back and sides edges
- manoeuvring handle situated at front side of the trolley
- base on four castors with diameter 100 mm, two of them with brakes
- all edges rounded and safe
- table top dimensions: 650x600 mm

	L	W	H
2-345	690	700	985



2-346

Medical trolley

- made of stainless steel 1.4301
- four same size drawers under the table top
- the drawers on ball bearing slides, full-extension, self-closing
- recessed table top with upraised back and sides edges
- manoeuvring handle situated at front side of the trolley
- base on four castors with diameter 100 mm, two of them with brakes
- all edges rounded and safe
- table top dimensions: 650x600 mm

	L	W	H
2-346	690	700	985

Accessories for medical trolleys



2-347
Medical trolley

- made of stainless steel 1.4301
- three drawers under the table top, plus one heating drawer for warming infusion fluids at the bottom of the trolley
- bottom of the heating drawer perforated to facilitate heat distribution
- thermoregulation placed above the heating drawer front, allowing temperature adjusting within the range from +35°C to +45°C
- the drawers on ball bearing slides, full-extension, self-closing
- manoeuvring handle situated at front side of the trolley
- recessed table top with upraised back and sides edges
- all edges rounded and safe
- base on four castors with diameter 100 mm, two of them with brakes
- table top dimensions 650x600 mm

	L	W	H
2-347	690	700	985



Medical trolley 2-346 with equipment

Rails for accessories mounted on the side of the trolley

- made of stainless steel 1.4301

2-933 Plexi divider

- removable drawer divider - into 4 parts -2-933-1
- removable drawer divider - into 6 parts -2-933-2
- removable drawer divider - into 8 parts -2-933-3

2-938 Bucket 7 l with handle

- made of stainless steel 1.4031

2-939 Waste wire basket with cover

- made of stainless steel 1.4031
- dimensions 311x226x255 mm

2-940 Knee basket (8 l)

- made of plastic

2-941 Waste bag holder with cover

- made of stainless steel 1.4301
- base for supporting waste bag
- capacity 15 l
- dimensions 220x238x316 mm

2-942 Infusion stand

- made of stainless steel 1.4301
- length: 1000 mm

2-945 Tray with holder

- made of stainless steel 1.4301
- dimensions 300x200x60 mm

2-946 Needle disposal container (0.7 l)

- made of plastic

2-947 Syringes disposal container (2 l)

- made of stainless steel 1.4301

2-948 Wire basket for gloves

- made of stainless steel 1.4301 rods
- container for 1 gloves box
- dimensions: 258x117x170 mm

2-949-1 Metal container for gloves

- made of stainless steel 1.4301 sheets
- container for 1 gloves box
- dimensions: 138x106x251 mm

2-950 Wire basket for catheter

- made of stainless steel 1.4301 rods
- base of the quiver made of stainless steel 1.4301 sheet
- dimensions: 120x150x590 mm

2-951 Upper frame extension with 11 plastic containers

- made of plastic
- 2 rows (of 5 and 6 pcs)

2-952 Upper frame extension with shelves

- made of stainless steel 1.4301
- option: 2 shelves (2-952-1), 3 shelves (2-952-2), 4 shelves (2-952-3)

2-953 Wire storage basket for needles

- made of stainless steel 1.4301

Fittings for the drawers and doors

- made of antimicrobial copper
- colour of the stainless steel or copper

Lateral retractable table top

- made of stainless steel 1.4301

Recessed table top

Upraised edges of the table top

Central lock



ALVO equipment for operating rooms is made of the highest quality materials. This group includes buckets, bowl holders, medical stools, medical steps (surgical platforms) and infusion stands (drip bottle holders). The equipment is designed to support the medical staff in the OR and are designed to complement all products from the ALVO catalogue.

MAIN FEATURES

The products of this group are made of high quality stainless steel. The products are equipped with castors with non-smudging wheels. All upholstery is made of high quality materials, which are resistant to disinfectants used in the OR.



2-020-1



2-020-3



2-020-0

2-020

Infusion stand

- made of stainless steel 1.4301
- five arm base made of steel powder coated
- height adjusted by hand: 1200-2150 mm
- castors diameter 50 mm, two of them with brakes
- stand can be equipped with hooks or bottle holders
- permissible load: 8 kg



	L	W	H	
2-020-0	560	560	1200/2150	4 hooks
2-020-1	560	560	1200/2150	2 hooks
2-020-2	560	560	1200/2150	2 bottle holders
2-020-3	560	560	1200/2150	4 bottle holders, tray



2-031

Bowl holder

- made of stainless steel 1.4301
- bowl stand on five arm base with five castors diameter 50 mm, two of them with brakes
- one removable bowl 3 or 6 l
- permissible load: 6 kg



	L	W	H	
2-031-1	560	560	850	3 l bowl
2-031-2	600	560	850	6 l bowl



2-032

Bowls holder

- made of stainless steel 1.4301
- bowls stand on five arm base with five castors diameter 50 mm, two of them with brakes
- two removable bowls 3 or 6 l
- permissible load: 12 kg



	L	W	H	
2-032-1	560	580	850	3 l bowl
2-032-2	560	700	850	6 l bowl



2-033-1

Heated bowl holder

- made of stainless steel 1.4301
- bowl stand on five arm base with five castors diameter 50 mm, all of them with brakes
- height adjusted from 1140 to 1280 mm by hydraulic pump with foot lever
- power supply – 230V/600W
- electric cable lenght 3 meters
- one stainless steel bowl with capacity of 6 l, plus one spare bowl
- termoregulated heated plate, adjustment by knob, max temperature of heated fluid 70°C



	L	W	H
2-033-1	560	560	1140/1280



2-033-2

Heated bowl holder

- made of stainless steel 1.4301
- bowl stand on five arm base with five castors diameter 50 mm, all of them with brakes
- height adjusted from 1140 to 1280 mm by hydraulic pump with foot lever
- power supply – 230V/600W
- electric cable lenght 3 meters
- one stainless steel bowl with capacity of 6 l, plus one spare bowl
- microprocessor termostate, electronically adjusted heat; max temperature of heated fluid 85°C



	L	W	H
2-033-2	560	560	1140/1280



2-033-3
Heated bowl holder

- made of stainless steel 1.4301
- bowl stand on five arm base with five castors diameter 50 mm, all of them with brakes
- fixed height of the stand
- power supply - 230V/600W
- electric cable lenght 3 meters
- one stainless steel bowl with capacity of 6 l, plus one spare bowl
- termoregulated heated plate, adjustment by knob, max temperature of heated fluid 70°C

CE

	L	W	H
2-033-3	560	560	1100



2-033-4
Heated bowl holder

- made of stainless steel 1.4301
- bowl stand on five arm base with five castors diameter 50 mm, all of them with brakes
- fixed height of the stand
- power supply - 230V/600W
- electric cable lenght 3 meters
- one stainless steel bowl with capacity of 6 l, plus one spare bowl
- microprocessor termostate, electronically adjusted heat; max temperature of heated fluid 85°C

CE

	L	W	H
2-033-4	560	560	1100



2-035
Mobile bucket

- made of stainless steel 1.4301
- removable bucket on four arm mobile base with four castors diameter 50 mm, without brakes
- bucket capacity - 10 l
- with 750 mm long manoeuvring handle

	L	W	H
2-035	360	360	880



2-036
Mobile bucket

- made of stainless steel 1.4301
- removable bucket on four arm mobile base with four castors diameter 50 mm, without brakes
- bucket capacity - 10 l
- without manoeuvring handle

	L	W	H
2-036	360	360	400



2-040
Medical stool

- made of stainless steel 1.4301
- round metal seat
- diameter of the seat: 360 mm
- manual height adjustment - gas spring supported by hand lever
- three arm base with foot ring and five castors with diameter 50 mm, two of them with brakes
- permissible load: 135 kg
- option: five arm base

CE

	L	W	H
2-040	480	480	460/600



2-041
Medical stool

- made of stainless steel 1.4301
- round metal seat
- diameter of the seat: 360 mm
- hydraulic height adjustment by foot lever
- three arm base with foot ring and five castors with diameter 50 mm, two of them with brakes
- permissible load: 135 kg
- option: five arm base

CE

	L	W	H
2-041	480	480	460/600



2-042
Medical stool

- made of stainless steel 1.4301
- round seat covered of high quality upholstery fabric, standard color medical green (6001) other colors available on page 106
- diameter of the seat: 350 mm
- manual height adjustment - gas spring supported by hand lever
- three arm base with foot ring and five castors with diameter 50 mm, two of them with brakes
- permissible load: 135 kg
- option: five arm base

CE

	L	W	H
2-042	480	480	490/630



2-043
Medical stool

- made of stainless steel 1.4301
- round seat covered of high quality upholstery fabric, standard color medical green (6001) other colors available on page 106
- diameter of the seat: 350 mm
- ergonomic, height adjusted back rest
- manual height adjustment - gas spring supported by hand lever
- three arm base with foot ring and five castors with diameter 50 mm, two of them with brakes
- permissible load: 135 kg
- option: five arm base

CE

	L	W	H
2-043	480	480	490/630



2-044
Medical stool

- made of stainless steel 1.4301
- round seat covered of high quality upholstery fabric, standard color medical green (6001) other colors available on page 106
- diameter of the seat: 350 mm
- ergonomic, height adjusted back rest
- hydraulic height adjustment by foot lever
- three arm base with foot ring and five castors with diameter 50 mm, two of them with brakes
- permissible load: 135 kg
- option: five arm base

CE

	L	W	H
2-044	480	480	490/630



2-045
Medical stool

- made of stainless steel 1.4301
- round seat covered of high quality upholstery fabric, standard color medical green (6001) other colors available on page 106
- diameter of the seat: 350 mm
- hydraulic height adjustment by foot lever
- three arm base with foot ring and five castors with diameter 50 mm, two of them with brakes
- permissible load: 135 kg
- option: five arm base

CE

	L	W	H
2-045	480	480	490/630



2-046
Medical stool

- made of stainless steel 1.4301
- ergonomic saddle shape seat covered of high quality black upholstery fabric
- manual height adjustment - gas spring supported by hand lever
- three arm base with foot ring and five castors with diameter 50 mm, two of them with brakes
- permissible load: 135 kg
- option: five arm base

CE

	L	W	H
2-046	480	480	460/600



2-050 | 2-051
Surgical platform

- made of stainless steel 1.4301
- four small legs with 20 mm level adjustment
- steps with anti slippery stripes
- platform available in two versions with one or two steps
- option: steel riffled plate

	L	W	H
2-050	500	650	410 2 steps
2-051-1	500	300	120 1 step
2-051-2	500	300	250 1 step
2-051-3	500	300	300 1 step



ALVO trolleys for medical devices are made of the highest quality stainless steel. During the design process, the trolleys with fixed shelves can be adapted to the customers' devices.

MAIN FEATURES

Drawers are installed on ball bearing rails, which enable them to slide to 80% of their length, with a safety retaining system. The trolleys are equipped with high quality castors with non-smudging wheels.



**2-550**

Trolley for medical devices

- made of stainless steel 1.4301
- two fixed shelves and one drawer in lower part of trolley
- distance between shelves and between shelf and drawer: 420 mm
- the drawer on ball bearing slides, full-extension, self-closing
- flat shelves
- height of the drawer:
 - exterior: 150 mm
 - interior: 110 mm
- trolley without maneuvering handle
- castors with diameter 100 mm, two of them with brakes

	L	W	H
2-550	650	550	1300

**2-551**

Trolley for medical devices

- made of stainless steel 1.4301
- three fixed shelves and one drawer in lower part of trolley
- distance between shelves and between shelf and drawer: 265 mm
- the drawer on ball bearing slides, full-extension, self-closing
- flat shelves
- height of the drawer:
 - exterior: 150 mm
 - interior: 110 mm
- trolley without maneuvering handle
- castors with diameter 100 mm, two of them with brakes

	L	W	H
2-551	650	550	1300

**2-552**

Trolley for medical devices

- made of stainless steel 1.4301
- four fixed shelves and one drawer in lower part of trolley
- distance between shelves and between shelf and drawer: 185 mm
- the drawer on ball bearing slides, full-extension, self-closing
- flat shelves
- height of the drawer:
 - exterior: 150 mm
 - interior: 110 mm
- trolley without maneuvering handle
- castors with diameter 100 mm, two of them with brakes

	L	W	H
2-552	650	550	1300

**2-560**

Trolley for medical devices

- made of stainless steel 1.4301
- two adjustable shelves and one drawer in lower part of trolley
- flat shelves, upraised back edge
- the drawer on ball bearing slides, full-extension, self-closing
- height of the drawer:
 - exterior: 150 mm
 - interior: 110 mm
- two manoeuvring handles
- trolley with six electric sockets, the oxygen bottle holder and camera holder
- castors with diameter 100 mm, two of them with brakes

	L	W	H
2-560	650	700	1470

885
including
the oxygen
bottle holder

**2-561**

Trolley for medical devices

- made of stainless steel 1.4301
- three adjustable shelves and one drawer in lower part of trolley
- flat shelves, upraised back edge
- the drawer on ball bearing slides, full-extension, self-closing
- height of the drawer:
 - exterior: 150 mm
 - interior: 110 mm
- two manoeuvring handles
- trolley with six electric sockets, the oxygen bottle holder and camera holder
- castors with diameter 100 mm, two of them with brakes

	L	W	H
2-561	650	700	1470

885
including
the oxygen
bottle holder

**2-562**

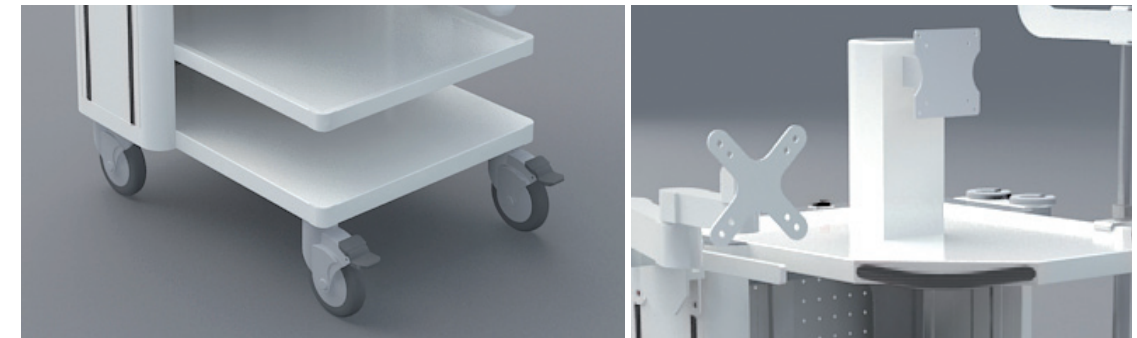
Trolley for medical devices

- made of stainless steel 1.4301
- four adjustable shelves and one drawer in lower part of trolley
- flat shelves, upraised back edge
- the drawer on ball bearing slides, full-extension, self-closing
- height of the drawer:
 - exterior: 150 mm
 - interior: 110 mm
- two manoeuvring handles
- trolley with six electric sockets, the oxygen bottle holder and camera holder
- castors with diameter 100 mm, two of them with brakes

	L	W	H
2-562	650	700	1470

885
including
the oxygen
bottle holder

Endoscopic trolley



2-570

Trolley for medical devices

- made of stainless steel 1.4301
- trolley with one drawer in upper part and two fixed shelves
- the drawer on ball bearing slides, full-extension, self-closing
- height of the drawer:
exterior: 150 mm
interior: 110 mm
- distance between shelves 240 mm
- flat table top and shelves
- manoeuvring handle
- oxygen bottle holders
- castors with diameter 100 mm, two of them with brakes

	L	W	H
2-570	440	700	860

2-572

Trolley for medical devices

- made of stainless steel, aluminum columns, whole powder coated
- trolley with one drawer in upper part and four shelves (three adjustable, one fixed)
- the drawer on ball bearing slides, full-extension, self-closing
- fixed table top for monitor with manoeuvring handle situated at front side of the trolley
- castors with diameter 125 mm, two of them with brakes
- trolley with eight electric sockets
- options: monitor arm and holder, flexible endoscope holder, additional mounting rails for accessories, additional shelves, basket

	L	W	H
2-572	580	650	1165

Accessories
for trolley
2-572

2-987

Flexible endoscope holder



2-988

Monitor arm



Fixed monitor holder

2-989



07

TROLLEYS FOR LINEN,
MEDICAL WASTE

ALVO[®]
MEDICAL

ALVO trolleys for linen and medical waste are made of the highest quality stainless steel. The trolleys are designed to store clean and dirty linen in the operating room and other facilities.

MAIN FEATURES

As standard catalogue products we offer single, double and triple trolleys in multiple sizes. The bag holder is designed to hold many kinds and sizes of bag. Trolleys can be made with cover or without cover. The covers can be ordered in colors, and can be opened manually or by foot lever. Trolleys are equipped with high quality castors with non-smudging wheels.





2-100 | 2-101

Trolley for plastic bags

- single trolley made of stainless steel 1.4301
- special clips for plastic bags
- castors with diameter 50 mm, two of them with brakes
- foot level control
- stainless steel cover with matte finish
- slow-closing cover
- options: bright finish or plastic cover in different colors available (red, blue, white, black); cover which stays open in 90°

Without cover:

	L	W	H	
2-100-1	340	380	560	30 l
2-100-2	400	440	710	60 l
2-100-3	400	450	910	100 l
2-100-4	400	450	1050	120 l

With cover:

	L	W	H	
2-101-1	340	460	560	30 l
2-101-2	400	510	710	60 l
2-101-3	415	510	910	100 l
2-101-4	415	580	1050	120 l



2-102 | 2-103

Trolley for plastic bags

- double trolley made of stainless steel 1.4301
- special clips for plastic bags
- castors with diameter 50 mm, two of them with brakes
- foot level control
- stainless steel covers with matte finish
- slow-closing cover
- options: bright finish or plastic covers in different colors available (red, blue, white, black); covers which stays open in 90°

Without cover:

	L	W	H	
2-102-1	840	440	710	60 l
2-102-2	840	450	910	100 l
2-102-3	840	450	1050	120 l

With cover:

	L	W	H	
2-103-1	840	510	710	60 l
2-103-2	860	510	910	100 l
2-103-3	860	580	1050	120 l



2-104 | 2-105

Trolley for plastic bags

- triple trolley made of stainless steel 1.4301
- special clips for plastic bags
- castors with diameter 50 mm, two of them with brakes
- foot level control
- stainless steel covers with matte finish
- slow-closing cover
- options: bright finish or plastic covers in different colors available (red, blue, white, black); covers which stays open in 90°

Without cover:

	L	W	H	
2-104-1	1280	440	710	60 l
2-104-2	1280	450	910	100 l
2-104-3	1280	450	1050	120 l

With cover:

	L	W	H	
2-105-1	1280	510	710	60 l
2-105-2	1300	510	910	100 l
2-105-3	1300	580	1050	120 l



2-106

Trolley for plastic bags

- single trolley made of stainless steel 1.4301
- special clips for plastic bags
- electrically activated cover
- motion sensor located at the height of the user foot
- cover is closing automatically - time can be programmed individually
- cover closing can be also made by motion sensor
- power supply - 230V, rechargeable battery included
- battery charging process fully automatically
- castors with diameter 50 mm, two of them with brakes
- stainless steel cover with matte finish
- options: bright finish or plastic cover in different colors available (red, blue, white, black)

	L	W	H	
2-106	415	545	1010	120 l



2-110

Trolley for clean
and dirty linen

- trolley with two shelves, without doors, made of stainless steel 1.4301
- table top with protecting rails 600x660 mm
- on back side of the trolley holder for bag 120 l, without cover
- castors with diameter 100 mm, two of them with brakes
- non-smudging wheels with bumpers

	L	W	H
2-110	640	1160	1100



2-111

Trolley for clean
and dirty linen

- trolley with two shelves and single door, made of stainless steel 1.4301
- table top with protecting rails 600x660 mm
- on back side of the trolley holder for bag 120 l, with cover open by foot lever
- castors with diameter 100 mm, two of them with brakes
- non-smudging wheels with bumpers

	L	W	H
2-111	640	1190	1100



2-112

Trolley for dirty linen

- trolley made of stainless steel 1.4301
- two covers - side flap opens to 1/3 of cart height, upper flap opens to 2/3 of cart height
- four castors with diameter 160 mm, two of them with brakes
- non-smudging wheels with bumpers
- safe, rounded edges
- option: frame for labels

	L	W	H
2-112-1	1110	660	1100
2-112-2	1310	660	1100



ALVO cabinets are made of the highest stainless steel panels and fit perfectly with the ALVO modular OR system. The cabinets can be adapted to the customers' needs in different configurations.

MAIN FEATURES

As standard products we offer cabinets made of stainless steel or stainless steel with glass. The cabinets can be self-standing, wall hanging or built-in the modular wall system. The doors can be right or left-opening. Doors and sides can be fitted with safety glass. Shelves are made of stainless steel and can be adjusted. As an additional feature the doors can have locks.





2-250
Cabinet

- made of stainless steel 1.4301
- one wing door cabinet
- left opening door*
- double walled doors with honeycomb core, lock, seal and c-type handle
- five adjustable shelves made of stainless steel
- cabinet on 140 mm legs with 20 mm leveling adjustment
- option: handle with antimicrobial copper

	L	W	H
2-250-1	400	470	1800
2-250-2	500	470	1800
2-250-3	600	470	1800
2-250-4	400	580	2000
2-250-5	500	580	2000
2-250-6	600	580	2000



2-251
Cabinet

- made of stainless steel 1.4301 and safety glass
- one glass wing door
- left opening door*
- doors with lock, seal and c-type handle
- five adjustable shelves made of stainless steel
- cabinet on 140 mm legs with 20 mm leveling adjustment
- options: handle with antimicrobial copper , milk glass

	L	W	H
2-251-1	400	470	1800
2-251-2	500	470	1800
2-251-3	600	470	1800
2-251-4	400	580	2000
2-251-5	500	580	2000
2-251-6	600	580	2000



2-252
Cabinet

- made of stainless steel 1.4301 and safety glass
- one glass wing door and glass sides
- left opening door*
- doors with lock, seal and c-type handle
- five adjustable shelves made of stainless steel
- cabinet on 140 mm legs with 20 mm leveling adjustment
- options: handle with antimicrobial copper , milk glass

	L	W	H
2-252-1	400	470	1800
2-252-2	500	470	1800
2-252-3	600	470	1800
2-252-4	400	580	2000
2-252-5	500	580	2000
2-252-6	600	580	2000



2-253
Cabinet

- made of stainless steel 1.4301
- cabinet with upper and lower section
- divided into two heights, both parts with left opening doors*
- double walled doors with honeycomb core, lock, seal and c-type handle
- upper part with four adjustable stainless steel shelves
- lower part with one adjustable stainless steel shelf
- cabinet on 140 mm legs with 20 mm leveling adjustment
- option: handle with antimicrobial copper

	L	W	H
2-253-1	400	470	1800
2-253-2	500	470	1800
2-253-3	600	470	1800
2-253-4	400	580	2000
2-253-5	500	580	2000
2-253-6	600	580	2000



2-254
Cabinet

- made of stainless steel 1.4301 and safety glass
- cabinet with upper and lower section
- divided into two heights, upper part with glass wing door and lower part with full wing door
- both parts with left opening doors*
- lower part: double walled doors with honeycomb core
- doors with lock, seal and c-type handle
- upper part with four adjustable stainless steel shelves
- lower part with one adjustable stainless steel shelf
- cabinet on 140 mm legs with 20 mm leveling adjustment
- options: handle with antimicrobial copper , milk glass

	L	W	H
2-254-1	400	470	1800
2-254-2	500	470	1800
2-254-3	600	470	1800
2-254-4	400	580	2000
2-254-5	500	580	2000
2-254-6	600	580	2000



2-255
Cabinet

- made of stainless steel 1.4301 and safety glass
- cabinet with upper and lower section
- divided into two heights, upper part with glass wing door and glass sides, and lower part with full wing door
- both parts with left opening doors*
- lower part: double walled doors with honeycomb core
- doors with lock, seal and c-type handle
- upper part with four adjustable stainless steel shelves
- lower part with one adjustable stainless steel shelf
- cabinet on 140 mm legs with 20 mm leveling adjustment
- options: handle with antimicrobial copper , milk glass

	L	W	H
2-255-1	400	470	1800
2-255-2	500	470	1800
2-255-3	600	470	1800
2-255-4	400	580	2000
2-255-5	500	580	2000
2-255-6	600	580	2000

* right opening doors on request



2-260
Cabinet

- made of stainless steel 1.4301
- two wing doors medical cabinet
- double walled doors with honeycomb core, lock, seal and c-type handle
- five adjustable shelves made of stainless steel
- cabinet on 140 mm legs with 20 mm leveling adjustment
- option: handle with antimicrobial copper

	L	W	H
2-260-1	800	470	1800
2-260-2	1000	470	1800
2-260-3	1200	470	1800
2-260-4	800	580	2000
2-260-5	1000	580	2000
2-260-6	1200	580	2000



2-265
Cabinet

- made of stainless steel 1.4301 and safety glass
- two wing glass doors medical cabinet
- doors with lock, seal and c-type handle
- five adjustable shelves made of stainless steel
- cabinet on 140 mm legs with 20 mm leveling adjustment
- options: handle with antimicrobial copper , milk glass

	L	W	H
2-265-1	800	470	1800
2-265-2	1000	470	1800
2-265-3	1200	470	1800
2-265-4	800	580	2000
2-265-5	1000	580	2000
2-265-6	1200	580	2000



2-267
Cabinet

- made of stainless steel 1.4301 and safety glass
- medical cabinet with two wing glass doors and glass sides
- doors with lock, seal and c-type handle
- five adjustable shelves made of stainless steel
- cabinet on 140 mm legs with 20 mm leveling adjustment
- options: handle with antimicrobial copper , milk glass

	L	W	H
2-267-1	800	470	1800
2-267-2	1000	470	1800
2-267-3	1200	470	1800
2-267-4	800	580	2000
2-267-5	1000	580	2000
2-267-6	1200	580	2000



2-261
Cabinet

- made of stainless steel 1.4301
- cabinet with upper and lower section
- divided into two heights, both parts with full wing doors
- double walled doors with honeycomb core, lock, seal and c-type handle
- upper part with four adjustable stainless steel shelves
- lower part with one adjustable stainless steel shelf
- cabinet on 140 mm legs with 20 mm leveling adjustment
- option: handle with antimicrobial copper

	L	W	H
2-261-1	800	470	1800
2-261-2	1000	470	1800
2-261-3	1200	470	1800
2-261-4	800	580	2000
2-261-5	1000	580	2000
2-261-6	1200	580	2000



2-269
Cabinet

- made of stainless steel 1.4301 and safety glass
- cabinet with upper and lower section divided into two heights, upper part with glass wing door and lower part with full wing door
- lower part: double walled doors with honeycomb core
- doors with lock, seal and c-type handle
- upper part with four adjustable stainless steel shelves
- lower part with one adjustable stainless steel shelf
- cabinet on 140 mm legs with 20 mm leveling adjustment
- options: handle with antimicrobial copper , milk glass

	L	W	H
2-269-1	800	470	1800
2-269-2	1000	470	1800
2-269-3	1200	470	1800
2-269-4	800	580	2000
2-269-5	1000	580	2000
2-269-6	1200	580	2000



2-270
Cabinet

- made of stainless steel 1.4301 and safety glass
- cabinet with upper and lower section divided into two heights, upper part with glass wing door and glass sides, and lower part with full wing door
- lower part: double walled doors with honeycomb core
- doors with lock, seal and c-type handle
- upper part with four adjustable stainless steel shelves
- lower part with one adjustable stainless steel shelf
- cabinet on 140 mm legs with 20 mm leveling adjustment
- options: handle with antimicrobial copper , milk glass

	L	W	H
2-270-1	800	470	1800
2-270-2	1000	470	1800
2-270-3	1200	470	1800
2-270-4	800	580	2000
2-270-5	1000	580	2000
2-270-6	1200	580	2000



2-262 Cabinet

- made of stainless steel 1.4301
- two full sliding doors, with lock and c-type handle
- five adjustable stainless steel shelves
- cabinet on 140 mm legs with 20 mm leveling adjustment
- option: handle with antimicrobial copper

2-266 Cabinet

- made of stainless steel 1.4301 and safety glass
- two glass sliding doors, with lock and c-type handle
- five adjustable stainless steel shelves
- cabinet on 140 mm legs with 20 mm leveling adjustment
- options: handle with antimicrobial copper , milk glass

2-268 Cabinet

- made of stainless steel 1.4301 and safety glass
- two glass sliding doors and glass sides
- doors with lock and c-type handle
- five adjustable stainless steel shelves
- cabinet on 140 mm legs with 20 mm leveling adjustment
- options: handle with antimicrobial copper , milk glass

2-263 Cabinet

- made of stainless steel 1.4301
- cabinet with upper and lower section
- divided into two heights, both parts with two full sliding doors
- doors with lock and c-type handle
- upper part with four adjustable stainless steel shelves
- lower part with one adjustable stainless steel shelf
- cabinet on 140 mm legs with 20 mm leveling adjustment
- option: handle with antimicrobial copper

2-271 Cabinet

- made of stainless steel 1.4301 and safety glass
- cabinet with upper and lower section
- divided into two heights, upper part with two glass sliding doors and lower part with two full sliding doors
- doors with lock and c-type handle
- upper part with four adjustable stainless steel shelves
- lower part with one adjustable stainless steel shelf
- cabinet on 140 mm legs with 20 mm leveling adjustment
- options: handle with antimicrobial copper , milk glass

2-272 Cabinet

- made of stainless steel 1.4301 and safety glass
- cabinet with upper and lower section
- divided into two heights, upper part with two glass sliding doors and glass sides, and lower part with two full sliding doors
- doors with lock and c-type handle
- upper part with four adjustable stainless steel shelves
- lower part with one adjustable stainless steel shelf
- cabinet on 140 mm legs with 20 mm leveling adjustment
- options: handle with antimicrobial copper , milk glass

2-264 Pass-through cabinet

- made of stainless steel 1.4301, openable from front and back part
- cabinet with upper and lower section
- divided into two heights, both parts with two full sliding doors
- doors with lock and c-type handle
- upper part with four adjustable stainless steel shelves
- lower part with one adjustable stainless steel shelf
- cabinet on 140 mm legs with 20 mm leveling adjustment
- option: handle with antimicrobial copper

	L	W	H
2-262-1	800	450	1800
2-262-2	1000	450	1800
2-262-3	1200	450	1800
2-262-4	800	560	2000
2-262-5	1000	560	2000
2-262-6	1200	560	2000

	L	W	H
2-266-1	800	450	1800
2-266-2	1000	450	1800
2-266-3	1200	450	1800
2-266-4	800	560	2000
2-266-5	1000	560	2000
2-266-6	1200	560	2000

	L	W	H
2-268-1	800	450	1800
2-268-2	1000	450	1800
2-268-3	1200	450	1800
2-268-4	800	560	2000
2-268-5	1000	560	2000
2-268-6	1200	560	2000

	L	W	H
2-263-1	800	450	1800
2-263-2	1000	450	1800
2-263-3	1200	450	1800
2-263-4	800	560	2000
2-263-5	1000	560	2000
2-263-6	1200	560	2000

	L	W	H
2-271-1	800	450	1800
2-271-2	1000	450	1800
2-271-3	1200	450	1800
2-271-4	800	560	2000
2-271-5	1000	560	2000
2-271-6	1200	560	2000

	L	W	H
2-272-1	800	450	1800
2-272-2	1000	450	1800
2-272-3	1200	450	1800
2-272-4	800	560	2000
2-272-5	1000	560	2000
2-272-6	1200	560	2000

	L	W	H
2-264-1	800	450	1800
2-264-2	1000	450	1800
2-264-3	1200	450	1800
2-264-4	800	560	2000
2-264-5	1000	560	2000
2-264-6	1200	560	2000



2-273
Cabinet

- made of stainless steel 1.4301
- double wardrobe made of stainless steel with bench
- wing doors with lock and holes for ventilation
- one shelf and pole in each part
- cabinet on 275 mm legs with 20 mm leveling adjustment
- dimension without bench: 650x450x1800 mm

	L	W	H	
2-273	650	750	2100	with bench



2-274
Endoscope cabinet

- made of stainless steel 1.4301 and safety glass
- one glass wing door
- left opening door*
- doors with lock, seal and c-type handle
- ventilation cuts
- drip tray in lower part of cabinet
- inside one or two retractable hangers for storing endoscopes made of stainless steel 1.4301
- each hanger is equipped with rubber inserts to protect instruments from damage
- cabinet on 140 mm legs with 20 mm leveling adjustment
- options: handle with antimicrobial copper , milk glass

	L	W	H	
2-274-1	400	470	2150	1 endoscope
2-274-2	600	470	2150	2 endoscopes



2-275
Endoscope cabinet

- made of stainless steel 1.4301 and safety glass
- two glass wing doors, equipped with lock, seal and c-type handle
- ventilation cuts
- drip tray in lower part of cabinet
- inside retractable hangers for storing endoscopes made of stainless steel 1.4301
- each hanger is equipped with rubber inserts to protect instruments from damage
- cabinet on 140 mm legs with 20 mm leveling adjustment
- options: handle with antimicrobial copper , milk glass

	L	W	H	
2-275-1	800	470	2150	4 endoscopes
2-275-2	1000	470	2150	5 endoscopes
2-275-3	1200	470	2150	6 endoscopes



2-276
Pass-through cabinet

- made of stainless steel 1.4301 and safety glass
- glass wing door on two sides with lock, seal and c-type handle
- left opening glass door*
- doors equipped with locking mechanism - opening the door from one side disables opening from the other side
- locking mechanism signals opening/closing via green/red LED lighting which change color upon opening/closing
- five adjustable stainless steel shelves
- options: handle with antimicrobial copper , milk glass

	L	W	H
2-276-1	400	450	1800
2-276-2	500	450	1800
2-276-3	600	450	1800
2-276-4	400	580	1800
2-276-5	500	580	1800
2-276-6	600	580	1800



2-277
Pass-through cabinet

- made of stainless steel 1.4301 and safety glass
- glass wing doors on two sides with lock, seal and c-type handle
- doors equipped with locking mechanism - opening the door from one side disables opening from the other side
- locking mechanism signals opening/closing via green/red LED lighting which change color upon opening/closing
- five adjustable stainless steel shelves
- options: handle with antimicrobial copper , milk glass

	L	W	H
2-277-1	800	450	1800
2-277-2	1000	450	1800
2-277-3	1200	450	1800
2-277-4	800	580	1800
2-277-5	1000	580	1800
2-277-6	1200	580	1800



2-278
Catheter cabinet

- made of stainless steel 1.4301 and safety glass
- two glass wing doors, equipped with lock, seal and c-type handle
- ventilation cuts
- drip tray in lower part of cabinet
- inside retractable hangers for storing catheters made of stainless steel 4 handles (2-278-1), 5 handles (2-278-2) or 6 handles (2-278-3)
- cabinet on 140 mm legs with 20 mm leveling adjustment
- options: handle with antimicrobial copper , milk glass, other dimensions**

	L	W	H	
2-278-1	800	470	2150	4 retractable handles
2-278-2	1000	470	2150	5 retractable handles
2-278-3	1200	470	2150	6 retractable handles

** on request cabinet dimensions can be changed in order to adapt to the catheter's dimensions



2-280
Wall-mounted
cabinet

- made of stainless steel 1.4301
- open without doors cabinet
- one adjustable stainless steel shelf

	L	W	H
2-280-1	400	350	600
2-280-2	500	350	600
2-280-3	600	350	600
2-280-4	800	350	600
2-280-5	1000	350	600
2-280-6	1200	350	600



2-281
Wall-mounted
cabinet

- made of stainless steel 1.4301
- one wing door cabinet
- left opening door*
- double walled doors with honeycomb core, seal and c-type handle
- one adjustable stainless steel shelf
- options: handle with antimicrobial copper , lock

	L	W	H
2-281-1	400	370	600
2-281-2	500	370	600
2-281-3	600	370	600



2-282
Wall-mounted
cabinet

- made of stainless steel 1.4301 and safety glass
- one glass wing door
- left opening door*
- doors with seal and c-type handle
- one adjustable stainless steel shelf
- options: handle with antimicrobial copper , lock, milk glass

	L	W	H
2-282-1	400	370	600
2-282-2	500	370	600
2-282-3	600	370	600



2-283
Wall-mounted
cabinet

- made of stainless steel 1.4301 and safety glass
- one glass wing door and glass sides
- left opening door*
- doors with seal and c-type handle
- one adjustable stainless steel shelf
- options: handle with antimicrobial copper , lock, milk glass

	L	W	H
2-283-1	400	370	600
2-283-2	500	370	600
2-283-3	600	370	600



2-284
Wall-mounted
cabinet

- made of stainless steel 1.4301
- two wing doors
- double walled doors with honeycomb core, seal and c-type handle
- one adjustable stainless steel shelf
- options: handle with antimicrobial copper , lock

	L	W	H
2-284-1	800	370	600
2-284-2	1000	370	600
2-284-3	1200	370	600



2-285
Wall-mounted
cabinet

- made of stainless steel 1.4301 and safety glass
- two wing glass doors
- doors with seal and c-type handle
- one adjustable stainless steel shelf
- options: handle with antimicrobial copper , lock, milk glass

	L	W	H
2-285-1	800	370	600
2-285-2	1000	370	600
2-285-3	1200	370	600



2-286
Wall-mounted
cabinet

- made of stainless steel 1.4301 and safety glass
- two glass wing doors and glass sides
- doors with seal and c-type handle
- one adjustable stainless steel shelf
- options: handle with antimicrobial copper , lock, milk glass

	L	W	H
2-286-1	800	370	600
2-286-2	1000	370	600
2-286-3	1200	370	600



2-287

Wall-mounted cabinet

- made of stainless steel 1.4301
- two full sliding doors with c-type handle
- one adjustable stainless steel shelf
- options: handle with antimicrobial copper , lock

	L	W	H
2-287-1	800	350	600
2-287-2	1000	350	600
2-287-3	1200	350	600

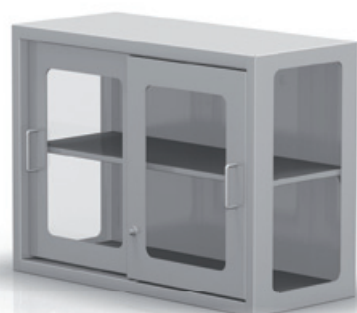


2-288

Wall-mounted cabinet

- made of stainless steel 1.4301 and safety glass
- two glass sliding doors with c-type handle
- one adjustable stainless steel shelf
- options: handle with antimicrobial copper , lock, milk glass

	L	W	H
2-288-1	800	350	600
2-288-2	1000	350	600
2-288-3	1200	350	600

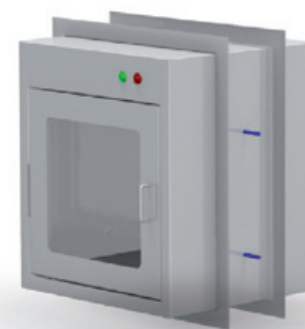


2-289

Wall-mounted cabinet

- made of stainless steel 1.4301 and safety glass
- two glass sliding doors and glass sides
- doors with c-type handle
- one adjustable stainless steel shelf
- options: handle with antimicrobial copper , lock, milk glass

	L	W	H
2-289-1	800	350	600
2-289-2	1000	350	600
2-289-3	1200	350	600



2-279

Pass-through cabinet

- made of stainless steel 1.4301 and safety glass
- left opening door, right opening on request
- door equipped with locking mechanism - opening the door from one side disables opening from the other side
- locking mechanism signals opening/closing via green/red LED lighting which change color upon opening/closing
- without interior shelf
- doors with seal and c-type handle
- inside dimensions in mm:
500x500x500 (2-279-1)
600x600x600 (2-279-2)
- options: handle with antimicrobial copper , milk glass

	L	W	H
2-279-1	620	570	715
2-279-2	720	670	815



2-290

Standing cabinet

- made of stainless steel 1.4301
- open without doors cabinet
- flat top, upraised back edge on 40 mm
- one adjustable stainless steel shelf
- cabinet on 140 mm legs with 20 mm leveling adjustment

	L	W	H
2-290-1	450	600	850
2-290-2	600	600	850
2-290-3	800	600	850
2-290-4	1000	600	850
2-290-5	1200	600	850



2-291

Standing cabinet

- made of stainless steel 1.4301
- one wing door cabinet
- left opening door, right opening on request
- double walled doors with honeycomb core, seal and c-type handle
- flat top, upraised back edge on 40 mm
- one adjustable stainless steel shelf
- cabinet on 140 mm legs with 20 mm leveling adjustment
- options: handle with antimicrobial copper , lock

	L	W	H
2-291-1	400	600	850
2-291-2	500	600	850
2-291-3	600	600	850



2-292

Standing cabinet

- made of stainless steel 1.4301
- two wing doors cabinet
- double walled doors with honeycomb core, seal and c-type handle
- one adjustable stainless steel shelf
- flat top, upraised back edge on 40 mm
- cabinet on 140 mm legs with 20 mm leveling adjustment
- options: handle with antimicrobial copper , lock

2-293

Standing cabinet

- made of stainless steel 1.4301
- two full sliding door with c-type handle
- one adjustable stainless steel shelf
- flat top, upraised back edge on 40 mm
- cabinet on 140 mm legs with 20 mm leveling adjustment
- options: handle with antimicrobial copper , lock

2-294

Standing cabinet

- made of stainless steel 1.4301
- open cabinet, without doors
- designed for storing hospital footwear
- cabinet on 140 mm legs with 20 mm leveling adjustment

2-295

Standing cabinet

- made of stainless steel 1.4301
- free same size drawers one below the other
- the drawers on ball bearing slides, full-extension, self-closing
- front made with honeycomb core
- each drawer with c-type handle
- flat top, upraised back edge on 40 mm
- cabinet on 140 mm legs with 20 mm leveling adjustment
- options: handle with antimicrobial copper , standard lock, central locking system, plexi divider

2-296

Standing cabinet

- made of stainless steel 1.4301
- four same size drawers one below the other
- the drawers on ball bearing slides, full-extension, self-closing
- front made with honeycomb core
- each drawer with c-type handle
- flat top, upraised back edge on 40 mm
- cabinet on 140 mm legs with 20 mm leveling adjustment
- options: handle with antimicrobial copper , standard lock, central locking system, plexi divider

2-297

Standing cabinet

- made of stainless steel 1.4301
- two same size drawers one below the other
- the drawers on ball bearing slides, full-extension, self-closing
- front made with honeycomb core
- each drawer with c-type handle
- flat top, upraised back edge on 40 mm
- cabinet on 140 mm legs with 20 mm leveling adjustment
- options: handle with antimicrobial copper , standard lock, central locking system, plexi divider

2-299

Standing cabinet

- made of stainless steel 1.4301
- two wing doors cabinet
- double walled doors with honeycomb core, seal and c-type handle
- cabinet without back wall and interior shelf
- table top with single bay*; dimensions: 400x400x250 mm
- plastic siphon
- back edge of table upraised to 40 mm, the rest of edges are recessed
- cabinet on 140 mm legs with 20 mm leveling adjustment
- options: handle with antimicrobial copper , faucet, lock, **ALVO CleanDrains siphon**

2-300

Standing cabinet

- made of stainless steel 1.4301
- one wing door cabinet
- left opening door, right opening on request
- double walled door with honeycomb core, seal and c-type handle
- cabinet without back wall and interior shelf
- table top with single bay; dimensions: 400x400x250 mm
- plastic siphon
- back edge of table upraised to 40 mm, the rest of edges are recessed
- cabinet on 140 mm legs with 20 mm leveling adjustment
- options: handle with antimicrobial copper , faucet, lock, **ALVO CleanDrains siphon**

	L	W	H
2-292-1	800	600	850
2-292-2	1000	600	850
2-292-3	1200	600	850

	L	W	H
2-293-1	800	600	850
2-293-2	1000	600	850
2-293-3	1200	600	850

	L	W	H	
2-294-1	600	400	600	4 pairs
2-294-2	850	400	600	6 pairs
2-294-3	1100	400	600	8 pairs
2-294-4	1350	400	600	10 pairs

	L	W	H
2-295-1	400	600	850
2-295-2	500	600	850
2-295-3	600	600	850

	L	W	H
2-296-1	400	600	850
2-296-2	500	600	850
2-296-3	600	600	850

	L	W	H
2-297-1	400	600	850
2-297-2	500	600	850
2-297-3	600	600	850

	L	W	H
2-299-1	800	600	850
2-299-2	1000	600	850
2-299-3	1200	600	850

	L	W	H
2-300	600	600	850

* right opening door on request

** for all cabinets table tops can be made from other materials see pages 92-93

* optionally bay can be located on the left part of the table top

new

Modular OR cabinet

Flexible and hygienic modular cabinet for the operating room storage and surgical workflow needs.

Closed profile shelves and rounded corners of the inside storage space significantly improve hygiene without sacrificing storage efficiency and safety.

The front interface of the cabinet can incorporate the hospital's logo or name of surgical department, that will be visible only when backlit (LED). Gentle LED lighting (RGB) is especially important in minimally invasive surgery rooms, where dimmed light hinders orientation.

Clinicians can choose the best configuration for their requirements. The cabinet system will easily integrate with the ALVO modular OR solution, offering design flexibility from single to multiplied cabinet units.



Introducing antimicrobial glass into the operating room

- antimicrobial glass
- wide angle hinges
- rounded corners to facilitate cleaning
- closed profile shelves, height-adjusted for ergonomic workflow
- large, ergonomic handles
- single chamber space inside
- white powder coating of the interior for better visual and maintenance experience
- flushed front surface with single piece wings, no external frame
- backlit with LED for both visual and functional aspect
- lower shelves with drawer system



Medical furniture with graphic motifs

Medical furniture with custom-designed printed motifs create a friendly and calming atmosphere of hospital interiors. This is particularly demanded in pediatric hospitals, neonatal wards, oncology centers, children clinics.

The printed motif will be adapted to the cabinets measurements and setup.



Graphic elements can be printed on stainless steel or on glass.

ALVO offers a combination of healing design art that is based on the shape of drop. Colors and layout will be custom-designed and visualized to match with the customer's interior.





ALVO baskets, shelves and trolleys are made of high quality stainless steel. They are specially designed for storing and transporting sterile goods.

MAIN FEATURES

As standard products we offer shelves and containers with different measurements and configurations. The trolleys are equipped with high quality castors with non-smudging wheels.





2-500

Sterile materials trolley

- made of stainless steel 1.4301
- designed to transport 6 (2-500-1), 9 (2-500-2) or 3 (2-500-3) sterile units
- double wing doors openable on 270°, with seal and lock
- two shelves inside
- two manoeuvring handles, along the shorter sides
- castors with diameter 160 mm, two of them with brakes
- non-smudging wheels**

	L	W	H
2-500-1	960	680	1240
2-500-2	1260	680	1240
2-500-3*	680	680	1240

* single door



2-510

Paper dispenser trolley

- made of stainless steel 1.4301
- designed to transport and storage papers and fabrics
- castors with diameter 80 mm, two of them with brakes
- non-smudging wheels**

	L	W	H
2-510	1100	400	1000



2-520

L-shaped platform trolley

- made of stainless steel 1.4301
- loading capacity: 200 kg
- trolley with manoeuvring handle, along the shorter side
- castors with diameter 125 mm, two of them with brakes
- non-smudging wheels**

	L	W	H
2-520	1080	600	850



2-720

Urine bottles and bed pans storage rack

- made of stainless steel 1.4301
- self-standing storage rack, equipped with four shelves, ending in a safety bar
- shelves on 140 mm legs with level adjustment

	L	W	H
2-720-1	1000	400	1800
2-720-2	600	400	1800



2-721

Wall-mounted urine bottles and bed pans storage rack

- wall mounted shelf made of stainless steel 1.4301
- equipped with four shelves, ending in a safety bar
- equipped with drip tray under the lower shelf

	L	W	H
2-721	600	300	900



2-150

Wall-mounted storage support

- made of stainless steel 1.4301
- wall mounted, two rails with 5 hooks (2-150-1) or 10 hooks (2-150-2)
- rails for hanging sterilization baskets, shelves, hangers
- proposed equipment see pages 84-87

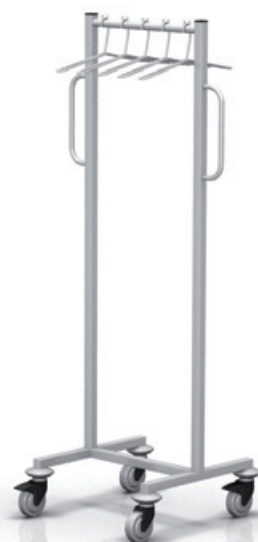
	L	W	H
2-150-1	-	-	900
2-150-2	-	-	1800



2-180
Mobile storage support

- made of stainless steel 1.4301
- trolley for hanging sterilization baskets, shelves, hangers
- 16 pairs of hooks, eight pairs on each side of trolley
- two manoeuvring handles
- castors with diameter 80 mm, two of them with brakes

	L	W	H
2-180	530	600	1500
	690		with handles



2-182
X-ray apron storage rack

- made of stainless steel 1.4301
- equipped with five hangers, specially designed for radiology aprons
- two manoeuvring handles
- base mounted on four 100 mm diameter wheels, two of them with brakes
- option: different quantity of hangers on request

	L	W	H
2-182	565	565	1600
	725		with handles



2-123
Storage rack

- made of stainless steel 1.4301 with five full, fixed shelves
- permissible load: 100 kg (larger on request)
- rack on 140 mm legs with level adjustment
- options: perforated shelves, different quantity and dimensions of shelves
- different rack dimensions on request

	L	W	H
2-123-1	600	500	1800
2-123-2	1000	500	1800
2-123-3	1200	500	1800



2-124
Storage rack

- made of stainless steel 1.4301 with five full shelves, three internal shelves adjustable
- permissible load: 100 kg (larger on request)
- rack on 140 mm legs with level adjustment
- options: perforated shelves, different quantity and other dimensions of shelves
- different rack dimensions on request

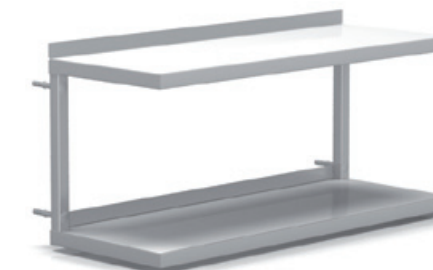
	L	W	H
2-124-1	600	500	1800
2-124-2	1000	500	1800
2-124-3	1200	500	1800



2-120
Wall-mounted shelf

- made of stainless steel 1.4301
- upraised back edge on 30 mm
- options: different shelf dimensions on request

	L	W	H
2-120-1	800	200	230
2-120-2	1000	300	230
2-120-3	1200	350	230



2-121
Wall-mounted shelf

- double shelf made of stainless steel 1.4301
- upraised back edges on 30 mm
- distance between shelves 290 mm
- options: different shelf dimensions on request

	L	W	H
2-121-1	800	300	380
2-121-2	1000	300	380
2-121-3	1200	300	380

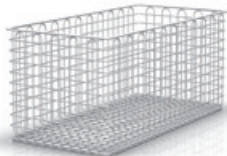
Additional accessories



2-151
Sterile goods basket

- made of stainless steel 1.4301 rods
- without front cut
- capacity: 0,5 sterile units

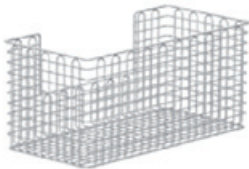
	L	W	H
2-151	575	280	135



2-152
Sterile goods basket

- made of stainless steel 1.4301 rods
- without front cut
- capacity: 1 sterile unit

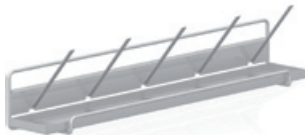
	L	W	H
2-152	575	280	265



2-153
Sterile goods basket

- made of stainless steel 1.4301 rods
- with front cut
- capacity: 1 sterile unit

	L	W	H
2-153	575	280	265



2-154
Bed pan wire shelf

- made of stainless steel 1.4301
- equipped with 5 hooks and a removable drip tray
- optionally the quantity of hooks can be changed on request

	L	W	H
2-154	625	105	141



2-155
Shelf

- made of stainless steel 1.4301
- shelf with upraised edges

	L	W	H
2-155	580	260	145



2-156
Wire shelf

- made of stainless steel 1.4301 rods
- double shelf

	L	W	H
2-156	580	285	285



2-159
Suture materials wire shelf

- made of stainless steel 1.4301 rods

	L	W	H
2-159	590	130	400



2-160
Hanging rack

- made of stainless steel 1.4301
- with eight hooks
- option: different quantity of hooks on request

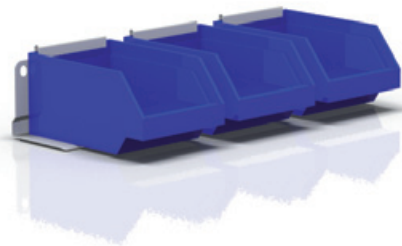
	L	W	H
2-160	580	180	100



2-161
Shoe holder

- made of stainless steel 1.4301
- holder with hooks for six pairs of shoes
- designed to be wall mounted
- option: different quantity of hooks on request

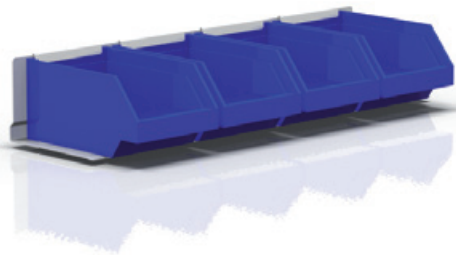
	L	W	H
2-161	570	180	300



2-165
Shelf with plastic containers

- holder made of stainless steel 1.4301
- three containers made of plastic
- container dimensions: 145x225x110 mm
- colors available: blue, green, yellow and red

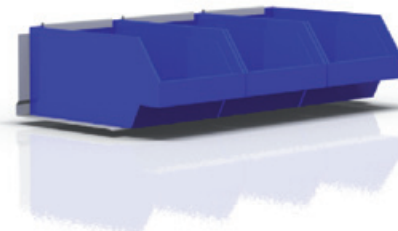
	L	W	H
2-165	530	230	120



2-166
Shelf with plastic containers

- holder made of stainless steel 1.4301
- four containers made of plastic
- container dimensions: 145x225x110 mm
- colors available: blue, green, yellow and red

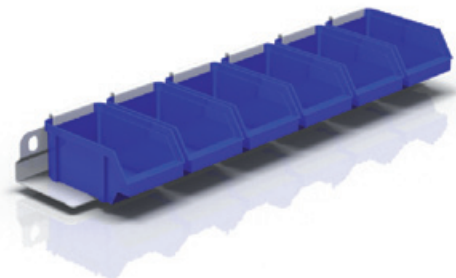
	L	W	H
2-166	655	230	120



2-167
Shelf with plastic containers

- holder made of stainless steel 1.4301
- three containers made of plastic
- container dimensions: 200x310x150 mm
- colors available: blue, green, yellow and red

	L	W	H
2-167	655	315	160



2-168
Shelf with plastic containers

- holder made of stainless steel 1.4301
- six containers made of plastic
- container dimensions: 76x120x56 mm
- colors available: blue, green, yellow and red

	L	W	H
2-168	530	125	66



10

WORKING TABLES

ALVO[®]
MEDICAL

ALVO working tables are made of the highest quality stainless steel and designed specifically for preparation rooms and other facilities where a lot of work space is needed. The tables can be tailor-made and can include bays, cabinets, drawers and other accessories.

MAIN FEATURES

As standard products we offer different configurations of tables with plain table tops, table tops with bays, cabinets and drawers. The tables have small plastic legs with level adjustment. There are additional accessories, such as: trap with filters for gypsum, lighted table top, water tap, shower tap, soap and disinfectant dispensers.



TABLE TOP DESIGN OPTIONS

Stainless steel table top

flat	recessed
Table top designs	
completely flat, no raised edges	
raised back edge (stainless steel)	
raised back and left or right edge (stainless steel)	
raised back and both sides edges (stainless steel)	
Type of sink*	
rectangular, welded	
circular, welded	
embedded (steel or ceramic)	
Number of sinks	
one	
two	
other quantities on request	
Location of the sink	
left or right** side of the table top	
central	
other preferences on request	
Preparation for water tap installation	
table top with hole ready to install water tap	
tablet top without hole	

* it is recommended to have raised edges when having a sink

** standard location of the sinks

Laminated table top / Table top made of Trespa

flat*
Table top design
option: raised edges achieve by adding a material strip
Type of sink
embedded (stainless steel or ceramic)
Number of sinks
one
two
other quantities on request
Location of sinks
left or right side of the table top
central
other preferences on request
Preparation for water tap installation
table top with hole ready to install water tap
tablet top without hole

* the laminated table top or the table top made of Trespa, is not available in the recessed version

Table top made of mineral acrylic material

flat	recessed
Table top design	
completely flat, no raised edges	
raised back edge (mineral acrylic material)**	
raised back and left or right edge (mineral acrylic material)**	
raised back and both sides edges (mineral acrylic material)**	
Type of sink	
rectangular, moulded (mineral acrylic material)**	
circular/oval, moulded sink (mineral acrylic material)**	
embedded (stainless steel or ceramic)**	
Number of sinks	
one	
two	
other quantities on request	
Location of sinks	
left or right side of the table top	
central	
other preferences on request	
Preparation for water tap installation	
table top with hole ready to install water tap	
tablet top without hole	

** Corian, Staron type



2-360

Working table with backlit
table top

- made of stainless steel 1.4301
- with backlit table top for testing of sterile units
- table on 140 mm legs with 20 mm leveling adjustment

	L	W	H
2-360-1	1400	600	850
2-360-2	1400	900	850



2-370

Plaster preparation
table

- made of stainless steel 1.4301
- with one bay with gypsum clarifier
- bay dimensions: 450x450x150 mm
- recessed table top
- the table is equipped with a ball valve outflow
- table on 140 mm legs with 20 mm leveling adjustment

	L	W	H
2-370-1	1400	600	850
2-370-2	1600	600	850



2-371

Plaster preparation
table

- made of stainless steel 1.4301
- with one bay with gypsum clarifier
- bay dimensions: 450x450x150 mm
- recessed table top
- the table is equipped with a ball valve outflow
- under table top, on the left side, a double wing door cabinet, 800 mm width
- one adjustable shelf inside the cabinet
- table on 140 mm legs with 20 mm leveling adjustment

	L	W	H
2-371-1	1400	600	850
2-371-2	1600	600	850



2-380

Working table

- made of stainless steel 1.4301
- upraised back edge on 40 mm, the rest of edges are flat
- table on 140 mm legs with 20 mm leveling adjustment

	L	W	H
2-380-1	400	600	850
2-380-2	500	600	850
2-380-3	600	600	850
2-380-4	800	600	850
2-380-5	1000	600	850
2-380-6	1200	600	850
2-380-7	1400	600	850



2-381

Working table

- made of stainless steel 1.4301
- upraised back edge on 40 mm, the rest of edges are flat
- one fixed shelf situated 140 mm above floor
- table on 140 mm legs with 20 mm leveling adjustment

	L	W	H
2-381-1	400	600	850
2-381-2	500	600	850
2-381-3	600	600	850
2-381-4	800	600	850
2-381-5	1000	600	850
2-381-6	1200	600	850
2-381-7	1400	600	850



2-382

Working table

- made of stainless steel 1.4301
- upraised back edge of the table top on 40 mm, the rest of edges are flat
- under table top, on the left side, one wing door cabinet, 400 mm width
- one adjustable shelf inside the cabinet
- table on 140 mm legs with 20 mm leveling adjustment

	L	W	H
2-382-1	1000	600	850
2-382-2	1200	600	850
2-382-3	1400	600	850



2-383

Working table

- made of stainless steel 1.4301
- upraised back edge of the table top on 40 mm, the rest of edges are flat
- under the table top, on the left side, three same size drawers, 400 mm width
- drawers on ball bearing slides, full-extension, self-closing
- height of each drawer 150 mm
- table on 140 mm legs with 20 mm leveling adjustment

	L	W	H
2-383-1	1000	600	850
2-383-2	1200	600	850
2-383-3	1400	600	850

* optionally sinks and cabinets can be located on the left or the right part of the table and table top
 ** table tops can be made from other materials see pages 92-93



2-390

Working table

- made of stainless steel 1.4301
- back edge of table upraised to 40 mm, the rest of edges are recessed
- bay with plastic siphon on the right side of the table top; dimensions: 400x400x250 mm
- masking frame in front under table top, height 250 mm
- table on 140 mm legs with 20 mm leveling adjustment
- options: shelf under the table top (product no. 2-391), faucet, available with **ALVO CleanDrains siphon**

	L	W	H
2-390-1	800	600	850
2-390-2	1000	600	850
2-390-3	1200	600	850
2-390-4	1400	600	850



2-392

Working table

- made of stainless steel 1.4301
- back edge of table upraised to 40 mm, the rest of edges are recessed
- bay with plastic siphon on the right side of the table top; dimensions: 400x400x250 mm
- under the table top one full, wing door cabinet, 400 mm width
- one adjustable shelf in the interior of the cabinet
- table on 140 mm legs with 20 mm leveling adjustment
- masking frame in front under table top, height 250 mm
- options: faucet, available with **ALVO CleanDrains siphon**

	L	W	H
2-392-1	1000	600	850
2-392-2	1200	600	850
2-392-3	1400	600	850



2-393

Working table

- made of stainless steel 1.4301
- back edge of table upraised to 40 mm, the rest of edges are recessed
- bay with plastic siphon on the right side of the table top; dimensions: 400x400x250 mm
- under the table top three same size drawers, 400 mm width
- the drawers on ball bearing slides, full-extension, self-closing
- height of each drawer 150 mm
- masking frame in front under table top, height 250 mm
- table on 140 mm legs with 20 mm leveling adjustment
- options: faucet, available with **ALVO CleanDrains siphon**

	L	W	H
2-393-1	1000	600	850
2-393-2	1200	600	850
2-393-3	1400	600	850



2-394

Working table

- made of stainless steel 1.4301
- back edge of table upraised to 40 mm, the rest of edges are recessed
- bay with plastic siphon on the right side of the table top; dimensions: 400x400x250 mm
- under the table top three same size drawers: 400 mm width and a full wing door cabinet: 400 mm width
- the drawers on ball bearing slides, full-extension, self-closing
- height of each drawer 150 mm
- one adjustable shelf inside the cabinet
- masking frame in front under table top, height 250 mm
- table on 140 mm legs with 20 mm leveling adjustment
- options: faucet, available with **ALVO CleanDrains siphon**

	L	W	H
2-394	1400	600	850



2-395

Working table

- made of stainless steel 1.4301
- table with two bays
- back edge of table upraised to 40 mm, the rest of edges are recessed
- two bays with plastic siphon; dimensions: 400x400x250 mm
- masking frame in front under table top, height 250 mm
- table on 140 mm legs with 20 mm leveling adjustment
- options: faucet, available with **ALVO CleanDrains siphon**

	L	W	H
2-395-1	1000	600	850
2-395-2	1200	600	850
2-395-3	1400	600	850



2-396

Working table

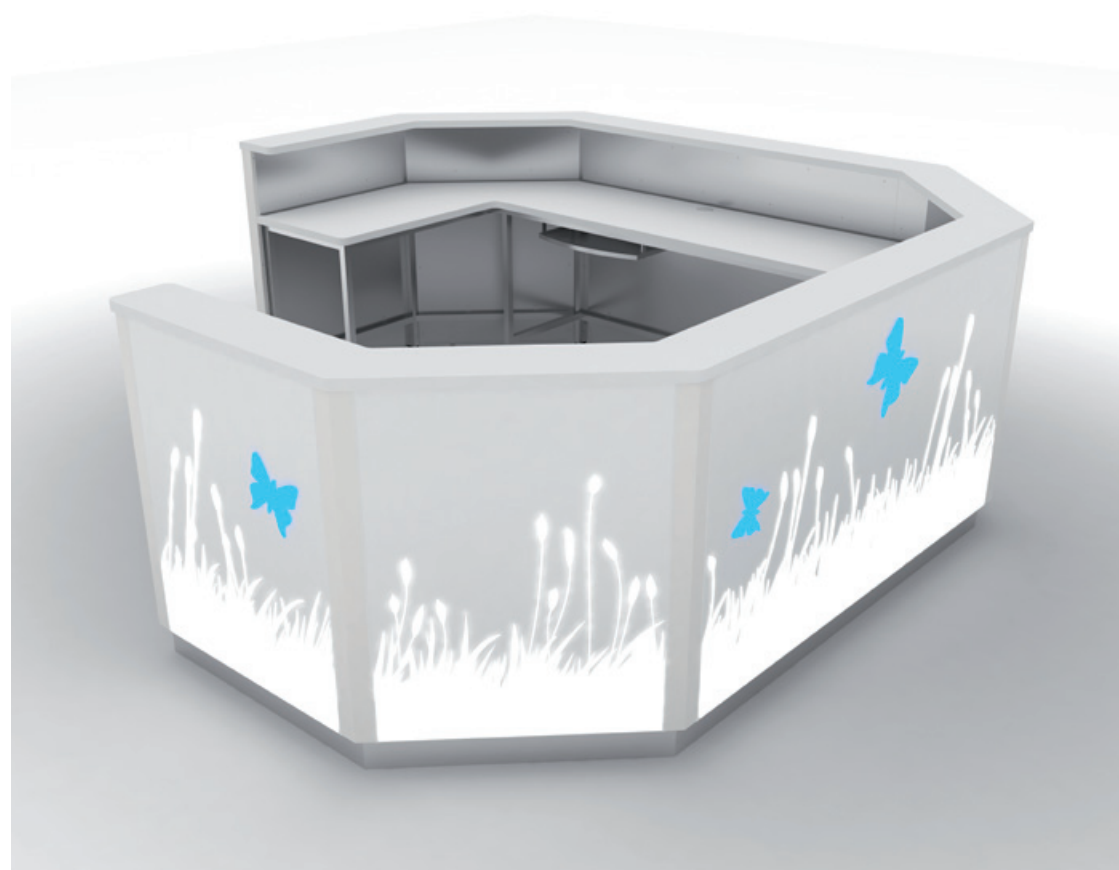
- made of stainless steel 1.4301
- table with one bay with plastic siphon
- dimension of the sink:
 - 2-396-1 – 670x470x300 mm
 - 2-396-2 – 870x470x300 mm
 - 2-396-3 – 1070x470x300 mm
 - 2-396-4 – 1270x470x300 mm
- back edge of table upraised to 40 mm, the rest of edges are flat
- masking frame in front under table top, height 300 mm
- table on 140 mm legs with 20 mm leveling adjustment
- options: faucet, depth of the bay 400 mm, double bay, available with **ALVO CleanDrains siphon**

	L	W	H
2-396-1	800	600	850
2-396-2	1000	600	850
2-396-3	1200	600	850
2-396-4	1400	600	850

* optionally sinks and cabinets can be located on the left or the right part of the table and table top
 ** table tops can be made from other materials see pages 92-93

2-397 Nurses' station counters

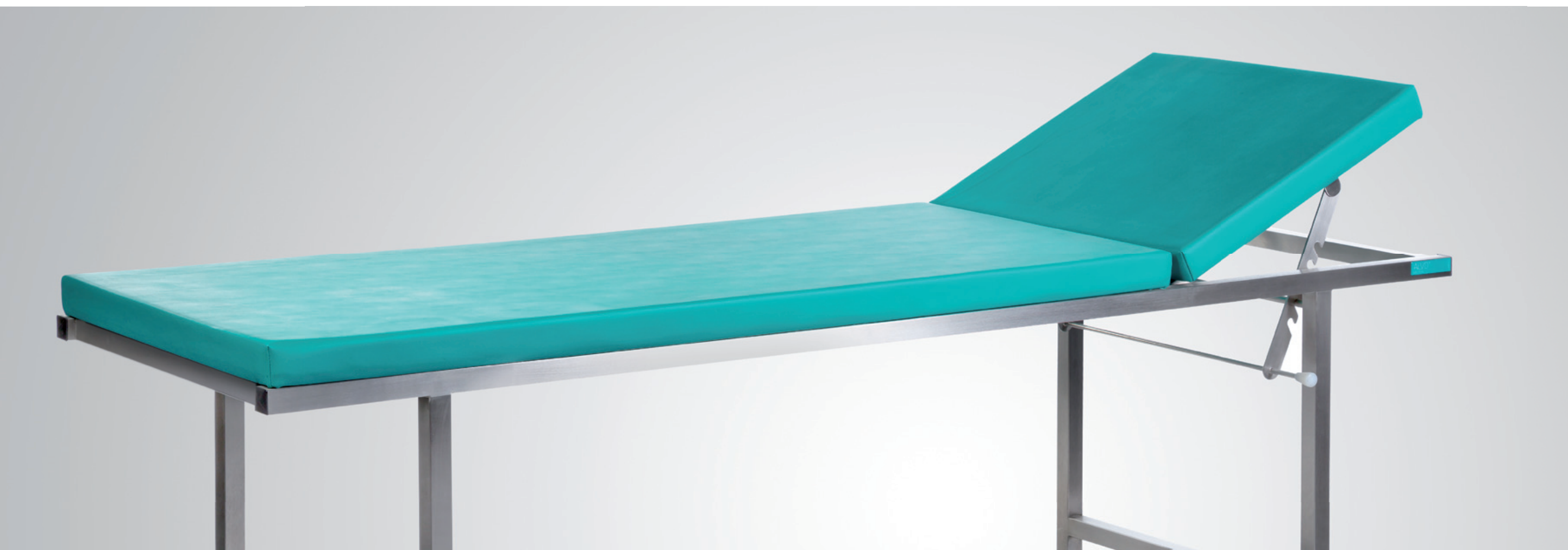
The nurses' stations not only carry out administrative tasks, but also clinically associated functions that have impact on the patient care conditions. ALVO provides adapted solutions for the nurses counters, configuring the space with the ergonomics and design in mind. Thanks to the wide range of cabinets and drawers, the counters can be designed specifically for each station. Nature-inspired graphics printed on the outer side of the counter (either made of steel or glass) create healing and soothing atmosphere in the intensive care units, emergency departments, hospital waiting areas.



ALVO couches and bed screens are made of the highest quality materials. The structure of the couches and bed screens are made of stainless steel. The couches upholstery and material used in screens are resistant to disinfectants used in hospitals.

MAIN FEATURES

Standard color for couches and screens is green, additional colors upon request.



new



2-061

Examination couch

- made of stainless steel and high quality upholstery fabric resistant to disinfectants
- two section couch
- head rest adjusted manually in range of 30°
- standard color medical green (6001) other colors available on page 106
- couch on 140 mm legs with 20 mm leveling adjustment
- permissible load: 160 kg
- option: castors

	L	W	H
2-061	1950	650	700

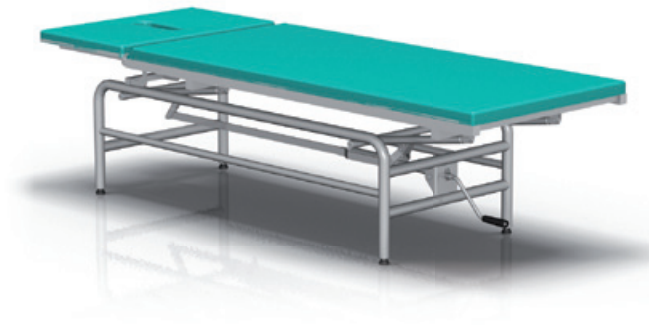


2-062

Examination couch

- made of stainless steel and high quality upholstery fabric resistant to disinfectants
- two section couch with head rest and foot rest adjustment
- head rest adjusted manually in range of 30°, foot rest adjusted manually in range of 0°-10°
- standard color medical green (6001) other colors available on page 106
- movable side barriers
- couch on castors with diameter 100 mm, two of them with brakes
- permissible load: 160 kg

	L	W	H
2-062	1950	760	700



2-063

Massage couch

- made of stainless steel and high quality upholstery fabric resistant to disinfectants
- two section couch with height and head rest adjustment
- couch height adjusted by crank in range of 530-850 mm
- head rest adjusted manually in range of -30°- +45°
- head rest with hole for easy breathing during massage
- standard color medical green (6001) other colors available on page 106
- couch on 140 mm legs with 20 mm leveling adjustment
- permissible load: 160 kg
- option: castors

	L	W	H
2-063	1950	680	530/850



2-066

Patient treatment bed

- made of steel, powder coated
- 3 standard side rails to facilitate the use of additional equipment
- mattress made of flexible Kaltschaum foam (reduces negative effects of pressure over the time)
- slipcover of the mattress made of sanipur (removable and washable)
- head/upper back section adjusted in range from 0° to 30°
- semi-automated mechanism to easily position the patients with acute respiratory distress
- 4 swivel castors, 2 with break system (Ø 125 mm)
- to be used as an emergency patient bed or couch in hospital treatment or adopted emergency patient zones
- permissible load: 175 kg

	L	W	H
2-066	2109	850	465/848



2-064

Baby examination cabinet

- made of stainless steel 1.4301 and high quality upholstery fabric resistant to disinfectants
- under the table top: on left side, one wing door cabinet with one adjustable shelf inside, on the right side three same size drawers
- the drawers on ball bearing slides, full-extension, self-closing
- table top with baby changing mat and electronic scale, capacity 20 kg with measure
- shelf height without scale and baby changing mat 850 mm
- powder coated cabinet and drawers

	L	W	H
2-064	1280	600	1150



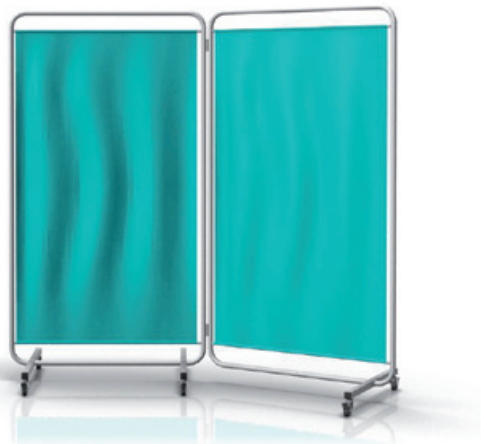
2-065

Washing couch

- made of stainless steel and high quality upholstery fabric resistant to disinfectants
- table with rubber washing tub with drain
- hydraulic height adjustment by foot lever in range 540-850 mm
- movable side barriers
- couch on castors with diameter 125 mm, two of them with brakes
- permissible load: 160 kg

	L	W	H	Mattress
2-065-1	2130	780	780/1070*	1950x600
2-065-2	2230	930	780/1070*	1950x660

* height quoted with raised barriers



2-070

Hospital folding screen

- base mounted on 50 mm wheels, part of them with brakes
- frame made of stainless steel 1.4301
- inside the fabric, standard color is green (other color on request)
- non-smudging wheels

	L	W	H	
2-070-1	1000	600	1880	one screen
2-070-2	2000	600	1880	two screens
2-070-3	3000	600	1880	three screens

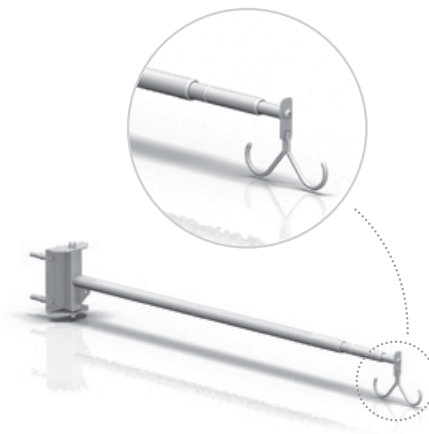


2-943

Infusion stand with couch clamp

- made of stainless steel 1.4301
- stand with two hooks for infusions

	L	W	H
2-943	1300	-	-



2-071

Telescopic extension arm

- made with retractable tubes - stainless steel 1.4301
- wall mounted telescopic extension arm with hooks for two drip bottles
- medical attested cloth, standard color is green
- cloth dimensions: 2000x1500 mm

	L	W	H
2-071	880/2060	-	-

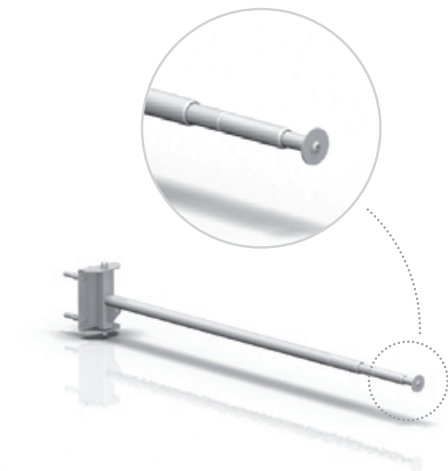


2-980

Paper holder asssembled to the couch

- made of stainless steel 1.4301

	L	W	H
2-980	630	125	-



2-072

Telescopic extension arm

- made with retractable tubes - stainless steel 1.4301
- wall mounted telescopic extension arm
- medical attested cloth, standard color is green
- cloth dimensions: 2000x1500 mm

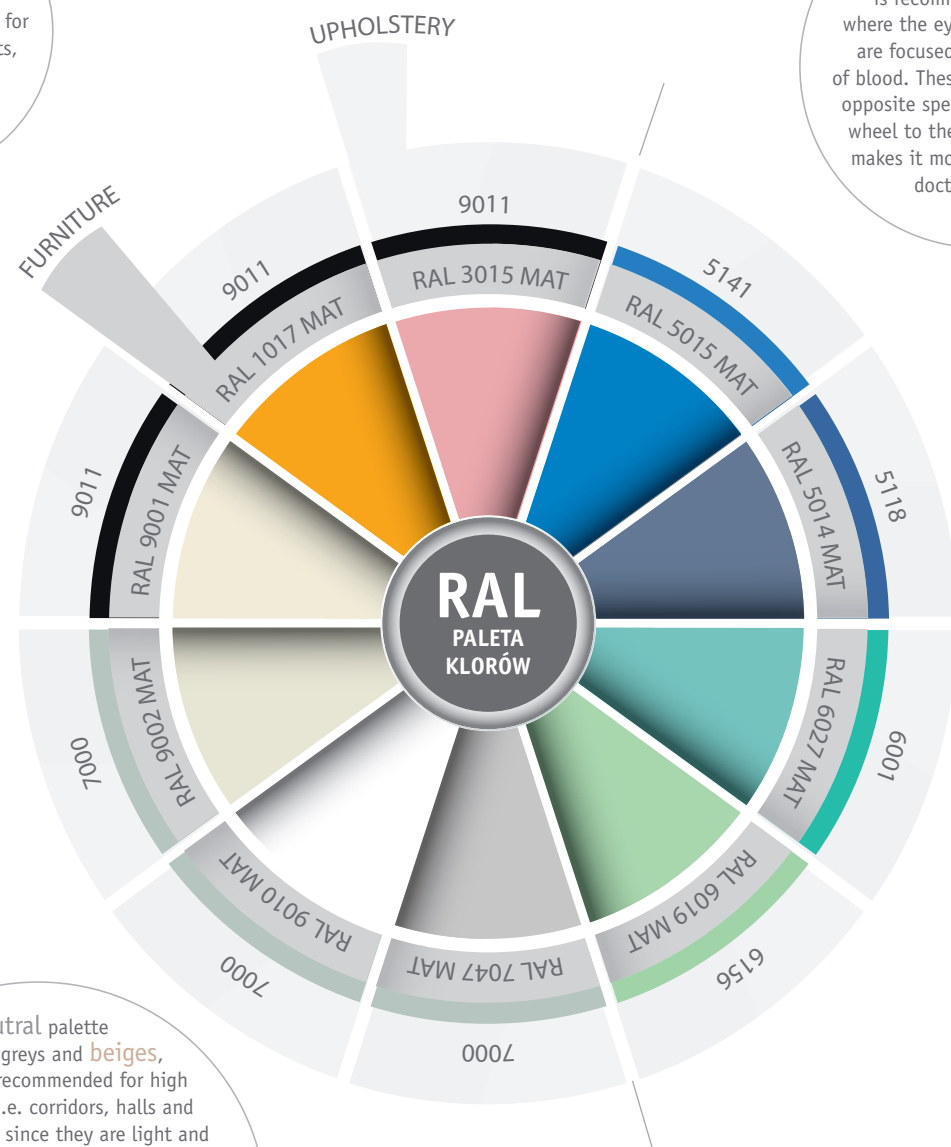
	L	W	H
2-072	880/2060	-	-



Following the philosophy of design that heals, while meeting the customers' requirements, ALVO offers wide range of options for customization of each product. Colors of the furnishing systems provided by ALVO Medical can be chosen from the standard RAL palette.

The colours **orange** or **pink** are recommended for maternity wards, but not for dermatology departments, as those colors tend to make patients feel itchy.

A **blue** and **green** palette is recommended for ORs, where the eyes of the clinicians are focused on the red spots of blood. These colours are on the opposite spectrum of the colour wheel to the red colour, which makes it more relaxing on the doctor's vision.



Neutral palette of whites, greys and **beiges**, is especially recommended for high traffic areas (i.e. corridors, halls and waiting rooms), since they are light and clear. Even though, when used in a corridor, some contrast as a guide is needed, since the total absence of colour can create a visual hazard for older people with reduced visual acuity, and even other patients with compromised equilibrium. For those areas, it is recommended to place artworks, coloured fittings (i.e. hand rails, doors, etc.) among the wall panels.

Certificates

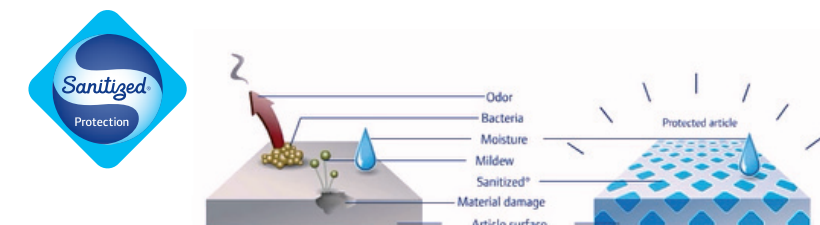
ALVO holds a certified quality management system according to **ISO 9001: 2015** and **ISO 13485: 2016** for design and development, production, installation and servicing of patient handling devices, related accessories and retractor systems.

We introduced **Quality Management System** for medical devices, in order to ensure top quality at every stage of the manufacturing process, from design through plans and specifications, materials and production methods used, to the final control stage of the ready-made product.

Hygiene

ALVO's cooperation with **IGP Pulvertechnik** and **Sanitized[®]** results in the best antimicrobial protection on all powder coated medical equipment.

Hygiene is of key importance in the operating theatre. The silver ion-based antibacterial treatment by Sanitized[®] is incorporated in the most demanding surfaces of the ALVO products in order to permanently and reliably protect them against the growth of bacteria such as *Staphylococcus aureus* and *Escherichia coli*.



Antimicrobial copper

Antimicrobial Copper surfaces are the most effective antimicrobial touch surface and are ideal for the healthcare environment where their inherent, continuous ability to kill bacteria will supplement infection control measures. ALVO Medical provides medical furniture and other products with antimicrobial copper touch surfaces. With different finishes, the line of products adapts to the hospital needs. The line includes mayo and instrument tables, and other products with antimicrobial fittings and handles, such as cabinets, anesthesia and emergency trolleys, and treatment trolleys.



ALVO Sp. z o.o. Sp.k.
ul. Południowa 21a
64-030 Śmigiel, Poland
tel. +48 65 518 98 49
fax +48 65 518 98 56
www.alvo.pl

